



35+
YEARS

AmericanTM
garage door supply inc.

SPRING 2024

CAR & RV WASH

WET. CORROSIVE. DIRTY. HIGH USE.

YOUR SOURCE FOR SPECIALTY PRODUCT SOLUTIONS.



- » POLYCARBONATE DOORS
- » FULL VISION GLASS DOORS
- » INSULATED WASHBAY DOORS
- » STAINLESS ENTRY DOORS

- » STAINLESS GARAGE DOOR PARTS
- » AIR-POWERED OPERATORS
- » SPECIALTY ELECTRIC OPERATORS
- » INFRARED TUBE HEATERS

Call (800) 233-1487 or (218) 751-5254 ★ Carwashdoors.com

Your Challenge, Our Specialty!

When you need more durability and reliability than what standard commercial products provide, American Garage Door Supply's **Specialty Garage Door and Operator Products** deliver unmatched durability and performance.

Designed and manufactured for some of the worst exposures on earth, our products are specifically engineered to last longer, operate more and withstand the rigors of wet, corrosive dirty and/or high-use environments. **Give us a call today and let our experience go to work for you!**

1-800-233-1487



WET • CORROSIVE • DIRTY

★ WELCOME ★

Dear valued customers, Thank you for giving us the opportunity to serve you as your specialty door, operator and heater products supplier for the last 3+ decades. We believe our high-quality products, knowledgeable staff and commitment to delivering a better product will benefit you and your customers with the value and the support you need, when you need it.

We are committed to provide you with the best product solutions possible on every project.

We truly appreciate your past and future business and the confidence you have placed in our company and our products. We are committed to provide you with only the highest quality products, convenient lead-times, helpful technical support and friendly customer service. Our goals are to help you grow your business with products & services that create value and assist you in your future success.

In our continuing effort to serve you better, we have developed this catalog to provide you with an easy-to-use guide when ordering, promoting and reselling our products. We welcome any suggestions or comments you may have to help us improve and to serve you better. Please keep in mind that individual product brochures, specifications and shop drawings are available for your use as well.

Thank you for choosing American Garage Door Supply!

CONTENTS



3 SPECIALTY OVERHEAD GARAGE DOORS

Our premium sectional overhead garage doors offer a number of section designs that includes polycarbonate, insulated glass and insulated sandwich style panels. Several hardware packages are available to meet your buildings' internal and external exposures, type and amount of use as well as other considerations. This series of doors have stood the test of time for well over three decades in tough conditions and are available in numerous sizes and track configurations.

21 STAINLESS/CUSTOM & OTHER GARAGE DOOR HARDWARE

Stainless steel & other specialty hardware door components eliminate the issues that rust, corrosion, contamination and wear create in wet, dirty and corrosive applications. Tough stainless steel provides a high-quality and clean appearance withstanding the test of time in punishing environments. Specialty rollers and coated counterbalance hardware deliver unmatched door performance, reliability and durability in just about any situation.

41 AIR-POWERED & ELECTRIC DOOR OPENERS & CONTROLS

We offer a number of air-powered & electric door operators as well as standard electric opener products to help you automate your specialty overhead garage door systems. Choose from a variety of types, designs, cycle demands, lifting capabilities and/or modifications to handle your specific application. Numerous specialty and standard area controls are available in a variety of NEMA ratings allowing you to tackle just about any operational need or type of situation. We have researched the industry and offer you the best controls we can find for harsh and normal environments.

53 INFRARED RADIANT HEATERS

Our Solaronics heaters are the perfect choice for any high-moisture or standard commercial environment. These heaters provide highly-efficient infrared energy that is converted into heat resulting in the surrounding air being warmed evenly through the building by both conduction & convection. The next best thing to floor heat in efficiency, effectiveness and cost. Low intensity and high intensity units available.

57 STAINLESS STEEL ENTRANCE DOORS

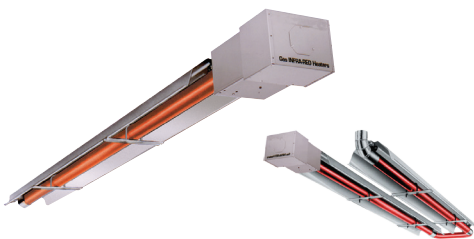
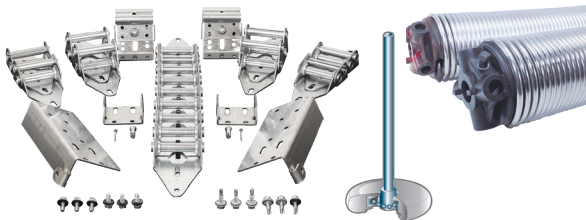
Tough applications demand tough products and our stainless steel entry door systems are no exception. These durable and attractive stainless steel panels are combined with high-quality stainless or aluminum frames that deliver the rust-protection qualities you need for wet or corrosive environments.

60 ORDER & DATA FORMS

Use our order and data collection forms to help us gather the information we need to create your quotation or order.

63 TERMS AND CONDITIONS

© American Garage Door Supply Inc. 1/1/2024



ABOUT US

American Garage Door Supply, Inc. is a leading provider of durable, high-quality garage doors, parts, operators and accessories. Since 1985, we've been manufacturing a broad variety of standard and customized solutions for:

- Car/Truck/Bus Washes
- Industrial Manufacturing
- Infrastructure
- Energy Oil & Gas
- Food & Beverage
- Agriculture
- Mining
- ANYWHERE there are Harsh Environments!

LET OUR EXPERIENCE GO TO WORK FOR YOU

Tap into over three decades of experience working with products in adverse environments. Our experienced and friendly staff is happy to assist you with product recommendations & selection, technical & design support as well as installation & repair assistance to help you tackle your next challenging project.

CUSTOM QUOTES

Our sales team can help you select the best products for your specialty situation and quickly create a custom quotation for your convenience. Give us a call today and let us put your items, quantities, material and shipping costs together for you quickly and accurately.

EASY ORDERING

Give us a call today and let our friendly, knowledgeable staff place your order into our system or use our website(s) for easy, 24/7/365 self-order entry.

TECHNICAL SUPPORT

Whether it's a new, retrofit or repair project issue, our technical support team has an answer for you. Our combined knowledge of over 100 years in the business draws from in-the-field experience and delivers the best outcome for you.

SPECIALTY PRODUCTS CATALOG

Complete line of specialty overhead garage doors, hardware, operators as well as infrared heaters and entry doors manufactured to outlast and outperform other known products in harsh demanding environments.

INDIVIDUAL PRODUCT LITERATURE

Product literature is available for your use on all of our product lines in both printed or digital formats.

PRODUCT SPECIFICATIONS

Specifications for our products are available including: specialty overhead garage doors, operators, heaters, entrance doors and many more.

SHOP DRAWINGS

Shop drawings can be generated for your project. Let us know your criteria and we can generate a shop drawing specific to your project. Shop drawings include: dimensional values, material specifications, spring locations and much more.

ACTIVE WEBSITES

Our websites are a fast and convenient way to download our product information, literature, specifications, shop drawings and more. Visit us at carwashdoors.com or stainlessgaragedoorparts.com 24/7/365.

FAST SHIPPING

Quick-turn-around times are important to us. American Garage Door Supply focuses on making our delivery lead-times better than the industry standard to help you finish that project quickly.

MADE IN THE USA

At American Garage Door Supply, we strive to support our fellow Americans and close neighbors whenever possible. When selecting materials and components for our products, we look for products built here in the United States and Canada first and include them if they meet our (and our customers) expectations for quality and value.

PRODUCT TRAINING & DEMONSTRATIONS

Visit our YouTube channel and choose from dozens of videos that feature overviews of our organization and our products along with detailed product demonstrations & identification, installation, service and maintenance tips. We even try throw in some humor. Find our channel at: www.youtube.com/AmericanGarageDoorSupplyInc.

SPECIALTY GARAGE DOORS



- POLYCARBONATE
- FULL VISION GLASS
- INSULATED WASHBAY
- OPTIONS/MODIFICATIONS
- REPLACEMENT SECTIONS
- SECTION COMPONENTS

WINDLOAD
PACKAGES

Available

Designed and manufactured originally for
wet, corrosive and high use environments.
Now used everywhere!

SPECIALTY GARAGE DOORS



Survivor Polycarbonate Doors handle the punishment of washbays and numerous other types of wet, corrosive or high-use facilities.

Introducing Our Specialty Garage Doors

American Garage Door Supply's specialty garage door models each feature a unique section design giving you the ability to choose a door package that matches your facilities needs in important areas such as: aesthetics, insulation value, light-transmission, exposure to moisture and contaminants and special operational requirements.

Our basic door models consist of: full-view polycarbonate, full-vision insulated glass, and solid sandwich-style insulated sections. Each section design has its individual features and helps you to create the door package that's just right for your building, application and budget.

Here's an overview of each door model to help you select the right model for your situation.

SURVIVOR POLYCARBONATE GARAGE DOORS (Pages 6-9)

Our Survivor series polycarbonate doors were originally designed for use in the car, truck and bus wash industry where they have been the number one choice for three decades. Their curb appeal, reliability, durability and ability to handle the punishing conditions in those types of situations has also made them a popular choice for a wide range of other applications ranging from transportation facilities, fertilizer plants, waste treatment facilities and dairy farms as well as numerous other wet, dirty or corrosive environments.



Featuring a tough, light-transmitting, multi-wall polycarbonate panel, Survivor Doors include a strong, heavy-duty beveled aluminum frame that sheds moisture.

Survivor Polycarbonate doors are available in two counterbalance systems to fit your requirements. Here's what you need to know.

1. Torsion Springs- Torsion spring counterbalance systems are our most popular counterbalance system and are used on any size door. They are easy to adjust and balance your door perfectly, equating to the smooth operation of your door with less wear and tear on your door hardware. Great for manually or automated operated doors. **(page 7)**

2. Strap Counterweights- Doors with strap counterweights are popular in areas that have constant exposure to moisture, dirt, contamination or are subject to repetitive use like automatic carwashes. Typically used for automated doors only, strap counterweight systems are offered on doors up to 12' x 10' in size only. **(page 8)**

When you need a Polycarbonate Door with Standard Hardware

Survivor Polycarbonate doors are available for standard commercial or residential use too. For applications that want the benefits of our polycarbonate doors without our signature 3" heavy-duty track and hardware, our "Bronze" models are supplied with lighter-duty, 2" track, standard-cycle springs, hollow torsion shafts and standard use hardware. **(page 9)**

Don't Forget The Options (Pages 15-20)

All of our door models have additional options available to match your situation more completely. Options include: full-vision sections, window lites, conveyor cutouts, painted or anodized frames, hinge gaskets, perimeter weatherseal and more.

SPECIALTY GARAGE DOORS

GOLIATH POLYCARBONATE GARAGE DOORS (Pages 10-11)

Our Goliath doors include all of the features that makes our Survivor Polycarbonate doors stand out, plus additional structural features that are needed for a door installed and operating in an extra-wide, or extra-tall doorway.

Reserved for door sizes over 16' x 16', Goliath doors feature a tough, translucent polycarbonate panel with a heavy-duty aluminum frame with additional support. They are a great choice for automated applications such as: transportation facilities, salt/brine operations, fertilizer facilities and other large truck or equipment wash down situations.

Goliath Polycarbonate doors are available with our torsion spring counterbalance systems only, but are offered with a variety of hardware packages to match a number of exposures and operational needs.

INSULATED WASHBAY GARAGE DOORS (Page 14)

Over 35 years ago, our Insulated Washbay Doors were the very first door models that we developed for the car, truck and bus wash market.

Due to their ability to outlast and outperform other insulated door designs, our Insulated Washbay Doors are still popular today for situations that are exposed to wet or moist conditions and where a solid, insulated section is needed.

Insulated Washbay Doors offer durability, security and energy-savings coupled with an exceptional appearance by combining a good-looking, high-strength, 26 ga. sandwich-style door section with an insulation that handles wet conditions.

Designed to shed moisture, this door models' sections include a tongue and groove meeting rail plus is built with special extruded polystyrene insulation that has minimal moisture absorption properties reducing weight creep and other problems due to the freezing of trapped moisture.

Produced in a wide range of sizes, Insulated Washbay Doors are offered with our signature hardware packages and provided with torsion spring systems giving you the ability to create a door package that meets your individual facility and local climate needs.

ULTRACLEAR FULL-VISION GARAGE DOORS (Pages 12-13)

Ultraclear Full-Vision Garage Doors are a great choice for any situation that needs a highly durable and reliable door with a clean, clear, professional look that allows full-visibility in and out of the building .

Featuring clear, tempered glass or acrylic glazing with a 5/8" air gap for insulation, Ultraclear's door sections are manufactured with a strong, heavy-duty aluminum frame and "extra" heavy-duty bottom rail. This results in a durable, high-strength section that gives you that stunning see-through showroom look and deep lasting impression.

Ultraclear doors are manufactured in sizes up to 14' X 14' and are supplied with a torsion spring system for counterbalancing. A number of heavy-duty hardware packages are offered allowing you the ability to choose the best product for your specific application and conditions.



The Goliath models provide all the corrosion resistance and light transmission you've come to expect with a Survivor Doors, but with the extra features needed for a large door openings.



Insulated Washbay Doors are a great choice for any wet or moist application that needs the strength, R-value and other benefits of a solid, insulated section.



Ultraclear door models feature insulated completely see-through glass or acrylic panels for that great first impression. Ideal for auto dealerships, service stations, lube shops, detail centers, restaurants and showrooms of all types.

SPECIALTY GARAGE DOORS



World's Toughest Full-View Polycarbonate Garage Doors



Made In U.S.A.

Unsurpassed Durability

Constructed of the toughest corrosion resistant materials available. Survivor™ Doors feature state-of-the-art materials to provide maximum life and durability in the most demanding environments.

Reliable Operation

Designed for harsh, high use applications. Survivor™ doors superior design, materials and hardware ensures smooth, easy operation, year-after-year.

Low Maintenance

Engineered for minimal maintenance and service. Survivor doors reduce annual costs and deliver a better overall value for your operation.

Attractive

Distinct look enhances your buildings appearance. Clear, translucent design allows light transmission both inside & outside the doorway maximizing bay visibility and providing around-the-clock security & comfort.

Complete Weather Protection

Protects people, vehicles, building interior and equipment from wind, cold and other weather hazards. 5 X-Wall panels offer additional thermal protection in any climate.



Advanced Materials... Superior Product.

5/8" Five X-Wall Polycarbonate Panel

Tough, shatterproof, translucent polycarbonate panels are strong, corrosion resistant and virtually indestructible. Polycarbonate panels allow high visibility and light transmission and are easy to maintain.

Double Panel Seal

Double panel seal provides protection from moisture infiltration and elements.



Aluminum Alloy Frame

Corrosion resistant aluminum stiles & rails provide a strong durable frame. Uniform stile thicknesses for better fastener holding power. Also available in powder coat or anodized color finish to match your color theme. (Mill finish standard)

Beveled Aluminum Rails

Beveled tongue & groove meeting rails shed moisture and eliminate watertraps.

Select The Hardware Package That Fits Your Application

Platinum

PREMIUM MODEL

HARDWARE FEATURES

- Hinges/Hardware: 12 ga. 304 Stainless
- Track: 3" Heavy Duty 12 ga. 304 Stainless
- Bearing Plates: 12 ga. 304 Stainless
- Shaft: Solid, Keyed 303 Stainless Steel
- Drums: Specialty Coated
- Couplers: Specialty Coated
- Bearings: Greaseable, Stainless
- Cable: 5/32" Stainless
- Rollers: Magnum™ "Supreme"
- Fasteners: Stainless/Specialty Coated
- Torsion Springs - Stainless Steel

Gold

DELUXE MODEL

HARDWARE FEATURES

- Hinges/Hardware: 12 ga. 304 Stainless
- Track: 3" Heavy Duty 12 ga. Galvanized Steel
- Bearing Plates: 12 ga. 304 Stainless
- Shaft: Solid, Keyed 303 Stainless
- Drums: Specialty Coated
- Couplers: Specialty Coated
- Bearings: Greaseable, Stainless
- Cable: 5/32" Stainless
- Rollers: Magnum™ "Original"
- Fasteners: Stainless/Specialty Coated
- Torsion Springs - Galvanized Steel

Silver

COMPETITIVE MODEL

HARDWARE FEATURES

- Hinges/Hardware: 11 ga. Galvanized
- Track: 3" Heavy Duty 12 ga. Galvanized Steel
- Bearing Plates: 11 ga. Galvanized
- Shaft: Solid, Keyed Galvanized
- Drums: Die Cast Aluminum
- Couplers: Painted Cast Iron
- Bearings: Greaseable, Standard
- Cable: 5/32" Stainless
- Rollers: Magnum™ "Original"
- Fasteners: Galvanized Steel
- Torsion Springs - Galvanized

SPECIALTY GARAGE DOORS

Polycarbonate Doors- Torsion Spring Models



SURVIVOR™
Premium
Polycarbonate Doors



Includes:
High Cycle Rust Resistant
Torsion Spring System

Standard Features

- Tough, Shatterproof 5/8" Five X-Wall Polycarbonate Panels
- Beveled Aluminum Stiles & Rails - No Watertraps!!
- 3" Angle Mounted Track
- Extended 1" Solid Keyed Shaft
- Headplates On Most Highlift Track Configurations
- Up to 100,000 High Cycle Springs
- Bottom Vinyl Bulb Weatherseal

Silver

Silver Hardware Package

		Height					
		8'	10'	12'	14'	16'	
Width	8'	SST8X8	SST8X10	SST8X12	SST8X14	SST8X16	
	10'	SST10X8	SST10X10	SST10X12	SST10X14	SST10X16	
	12'	SST12X8	SST12X10	SST12X12	SST12X14	SST12X16	
	14'	SST14X8	SST14X10	SST14X12	SST14X14	SST14X16	
	16'	SST16X8	SST16X10	SST16X12	SST16X14	SST16X16	

Gold

Gold Hardware Package

		Height					
		8'	10'	12'	14'	16'	
Width	8'	SGT8X8	SGT8X10	SGT8X12	SGT8X14	SGT8X16	
	10'	SGT10X8	SGT10X10	SGT10X12	SGT10X14	SGT10X16	
	12'	SGT12X8	SGT12X10	SGT12X12	SGT12X14	SGT12X16	
	14'	SGT14X8	SGT14X10	SGT14X12	SGT14X14	SGT14X16	
	16'	SGT16X8	SGT16X10	SGT16X12	SGT16X14	SGT16X16	

Platinum

Platinum Hardware Package

		Height					
		8'	10'	12'	14'	16'	
Width	8'	SPT8X8	SPT8X10	SPT8X12	SPT8X14	SPT8X16	
	10'	SPT10X8	SPT10X10	SPT10X12	SPT10X14	SPT10X16	
	12'	SPT12X8	SPT12X10	SPT12X12	SPT12X14	SPT12X16	
	14'	SPT14X8	SPT14X10	SPT14X12	SPT14X14	SPT14X16	
	16'	SPT16X8	SPT16X10	SPT16X12	SPT16X14	SPT16X16	



Headroom Requirements

Standard Lift

- 3" Track- 15" Radius- 18" (up to 18' high doors)
- 2" Track- 15" Radius- 16"
- 2" Track- 12" Radius- 13"

High Lift

- 3" Track- 15" Radius- Door Ht. + Highlift + 12"
- 2" Track- 15" Radius- Door Ht. + Highlift + 11"

Vertical Lift

- 3" Track- Door Ht. + 18"
- 2" Track- Door Ht. + 18"

Low Headroom

- 3" Track- Front Mount- 12"
- 3" Track- Rear Mount- 9"
- 2" Track- Front Mount- 10"
- 2" Track- Rear Mount- 6-1/2"
- Add for NuMax Operator - 6"

SPECIALTY GARAGE DOORS

SURVIVORTM Premium Polycarbonate Doors



Includes:

- Heavy Duty Nylon Strap
- Aluminum Spool Hub
- Molded Strap Spool
- Counterweight Tube
- Counterweights

Standard Features

- Tough, Shatterproof 5/8" Five X-Wall Polycarbonate Panels
- Beveled Aluminum Stiles & Rails - No Watertraps!!
- 3" Angle Mounted Track
- Extended 1" Solid Keyed Shaft
- Headplates On Most Highlift Track Configurations
- Strap Counterweight Counterbalance System
- Bottom Vinyl Bulb Weatherseal



Headroom Requirements

Standard Lift

- 3" Track- 15" Radius- 17"
- 2" Track- 15" Radius- 16"
- 2" Track- 12" Radius- 13"

High Lift

- 3" Track- 15" Radius- Door Ht. + Highlift + 12"
- 2" Track- 15" Radius- Door Ht. + Highlift + 11"

Vertical Lift

- 3" Track- Door Ht. + 18"
- 2" Track- Door Ht. + 18"

Polycarbonate Doors- Strap Counterweight Models



Silver

Silver Hardware Package

		Height				
		8'	10'	12'	14'	16'
Width	10'	SSB10X8	SSB10X10	Consult Factory Other Sizes Available		
	12'	SSB12X8	SSB12X10			

Gold

Gold Hardware Package

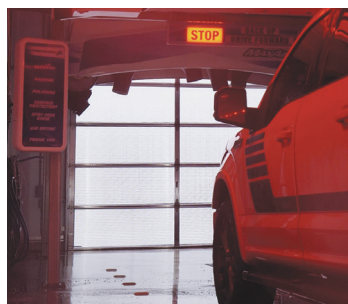
		Height				
		8'	10'	12'	14'	16'
Width	10'	SGB10X8	SGB10X10	Consult Factory Other Sizes Available		
	12'	SGB12X8	SGB12X10			

Platinum

Platinum Hardware Package

		Height				
		8'	10'	12'	14'	16'
Width	10'	SPB10X8	SPB10X10	Consult Factory Other Sizes Available		
	12'	SPB12X8	SPB12X10			

An Excellent Choice for Automatic Carwashes



Strap counterweight models are quiet, smooth, lubrication-free and can last up to 500,000 cycles without replacement. An excellent choice for any type of automatic carwash or anywhere there is continual moisture exposure and/or high use.

SPECIALTY GARAGE DOORS

Polycarbonate Doors- Standard Use Hardware Packages



SURVIVORTM
 Polycarbonate
 Garage Door For Standard
 Commercial Applications



The Bronze hardware package of our Survivor Polycarbonate Doors feature all of the qualities of our translucent door sections, coupled with the hardware you would normally find on standard commercial overhead garage doors.

Includes:
 High Cycle Rust Resistant
 Torsion Spring System

Bronze

Bronze Hardware Package

		Height			
		8'	10'	12'	14'
Width	8'	SBO08X08	SBO08X10	SBO08X12	SBO08X14
	10'	SBO10X8	SBO10X10	SBO10X12	SBO10X14
	12'	SBO12X8	SBO12X10	SBO12X12	SBO12X14
	14'	SBO14X8	SBO14X10	SBO14X12	SBO14X14
	16'	SBO16X8	SBO16X10	SBO16X12	SBO16X14

Headroom Requirements

Standard Lift

2" Track- 15" Radius- 16"

High Lift

2" Track- 15" Radius- Door Ht. + Highlift + 11"

Vertical Lift

2" Track- Door Ht. + 18"

Low Headroom

2" Track- Front Mount- 12" 2- Rear Mount- 6-1/2"
 Add for Electric Drawbar Operator - 4"

Standard Features

- Tough, Shatterproof 5/8" Five X-Wall Polycarbonate Panels
- Beveled Aluminum Stiles & Rails - No Watertraps!!
- 3" Angle Mounted Track
- Extended 1" Solid Keyed Shaft
- Headplates On Most Highlift Track Configurations
- Up to 12,000 High Cycle Springs
- Bottom Vinyl Bulb Weatherseal

Hardware Features

- Hinges/Hardware: 14 Gauge Galvanized
- Track: 2" Medium Duty 14 ga. Galvanized
- Bearing Plates: 11 ga. Galvanized
- Shaft: Hollow, Galvanized Steel
- Drums: Die Cast Aluminum
- Couplers: None
- Bearings: Standard Flange Radial
- Cable: 1/8" - 5/32" Galvanized Steel
- Rollers: Commercial Steel, 10 Ball
- Fasteners: Galvanized Steel
- Torsion Springs: Galvanized Steel



Made In U.S.A.

Polycarbonate Sections Only Packages

Sections only packages include a bottom section with an aluminum retainer and bulb seal along with the correct number of intermediate sections to replace the sections of a specific polycarbonate door size.

For full-vision sections, Please add from the door options.

		Height			
		8'	10'	12'	14'
Width	8'	SSO08X08	SSO08X10	SSO08X12	SSO08X14
	10'	SSO10X8	SSO10X10	SSO10X12	SSO10X14
	12'	SSO12X8	SSO12X10	SSO12X12	SSO12X14
	14'	SSO14X8	SSO14X10	SSO14X12	SSO14X14

For 16'0" or wider doors, please specify single or double end stile.



Sections Only with Optional Full Vision Section

SPECIALTY GARAGE DOORS



Polycarbonate Doors



Made In U.S.A.

Giant Features, Huge Benefits

Unsurpassed Durability

Constructed of the toughest corrosion resistant materials available. Survivor™ Goliath doors feature state-of-the-art materials to provide maximum life and durability even in the most demanding environments.

Reliable Operation

Designed for harsh, high use applications. Goliath™ doors superior section design and hardware ensure smooth, reliable operation year-after-year.

Low Maintenance

Engineered for minimal maintenance and service. Goliath doors reduce annual costs and deliver a better overall value for your operation.

Attractive

Distinct look enhances your buildings appearance. Clear, translucent design allows light transmission both inside & outside the doorway maximizing bay visibility and providing around-the-clock security & comfort.

Complete Weather Protection

Protects people, vehicles, building interior and equipment from wind, cold and other weather hazards. 5 X-Wall panels offer additional thermal protection in any climate.

Advanced Materials... Superior Product.

5/8" Five X-Wall Polycarbonate Panels

Tough, shatterproof, translucent polycarbonate panels are strong, corrosion resistant and virtually indestructible. Polycarbonate panels allow high visibility and are easy to maintain.

Aluminum Alloy Frame

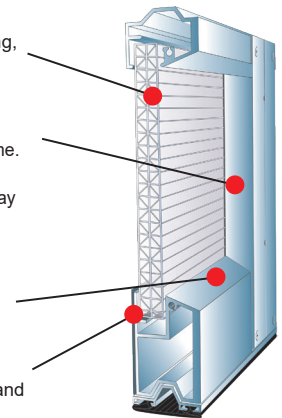
Heavy duty aluminum stiles and rails provide a strong, durable frame. Industrially designed, oversized bottom rail on the bottom section adds rigidity and structural integrity to the complete door. Frame may be available in powdercoat or anodized finish to match your color theme. (Mill finish standard)

Beveled Aluminum Rails

Beveled tongue & groove meeting rails shed moisture and eliminate watertraps.

Double Panel Seal

Double panel seal provides protection from dirt, contamination and moisture infiltration.



Select The Hardware Model That Fits Your Application

Platinum

PREMIUM MODEL

HARDWARE FEATURES

- Hinges/Hardware: 12 ga. 304 Stainless
- Track: 3" Heavy Duty 12 ga. 304 Stainless
- Bearing Plates: 12 ga. 304 Stainless
- Shaft: Solid, Keyed 303 Stainless Steel
- Drums: Specialty Coated
- Couplers: Specialty Coated
- Bearings: Greaseable, Stainless
- Cable: 5/32" Stainless
- Rollers: Magnum™ "Supreme"
- Fasteners: Stainless/Specialty Coated
- Torsion Springs - Stainless Steel

Gold

DELUXE MODEL

HARDWARE FEATURES

- Hinges/Hardware: 12 ga. 304 Stainless
- Track: 3" Heavy Duty 12 ga. Galvanized Steel
- Bearing Plates: 12 ga. 304 Stainless
- Shaft: Solid, Keyed 303 Stainless
- Drums: Specialty Coated
- Couplers: Specialty Coated
- Bearings: Greaseable, Stainless
- Cable: 5/32" Stainless
- Rollers: Magnum™ Original
- Fasteners: Stainless/Specialty Coated
- Torsion Springs - Galvanized Steel

Silver

COMPETITIVE MODEL

HARDWARE FEATURES

- Hinges/Hardware: 11 ga. Galvanized
- Track: 3" Heavy Duty 12 ga. Galvanized Steel
- Bearing Plates: 11 ga. Galvanized
- Shaft: Solid, Keyed Galvanized
- Drums: Die Cast Aluminum
- Couplers: Painted Cast Iron
- Bearings: Greaseable, Standard
- Cable: 5/32" Stainless
- Rollers: Magnum™ Original
- Fasteners: Galvanized Steel
- Torsion Springs - Galvanized Steel

SPECIALTY GARAGE DOORS

The Polycarbonate Door for Extra Big Openings

The Goliath model of our Survivor Polycarbonate Doors feature an extra heavy-duty bottom rail and a large hat strut that adds a whole new level of structural integrity to your extra wide and/or extra tall polycarbonate overhead garage door.

The heavy-duty aluminum bottom rail keeps the door straight and true with the strength that is required to handle the wide span without sagging virtually eliminating the "smiling effect". Extra large aluminum hat strut provides the rigidity you need to resist the wind and prevent deflection. Our Goliath product still provides all the corrosion resistance you've come to expect in a Survivor door and is available in our signature Silver, Gold and Platinum hardware packages.



Includes:

Rust Resistant Torsion Spring System

Silver

Silver Hardware Package

		Height						
		8'	10'	12'	14'	16'	18'	20'
Width	20'	SST20X8	SST20X10	SST20X12	SST20X14	SST20X16	SST20X18	SST20X20
	22'	SST22X8	SST22X10	SST22X12	SST22X14	SST22X16	SST22X18	SST22X20
	24'	SST24X8	SST24X10	SST24X12	SST24X14	SST24X16	SST24X18	SST24X20

Gold

Gold Hardware Package

		Height						
		8'	10'	12'	14'	16'	18'	20'
Width	20'	SGT20X8	SGT20X10	SGT20X12	SGT20X14	SGT20X16	SGT20X18	SGT20X20
	22'	SGT22X8	SGT22X10	SGT22X12	SGT22X14	SGT22X16	SGT22X18	SGT22X20
	24'	SGT24X8	SGT24X10	SGT24X12	SGT24X14	SGT24X16	SGT24X18	SGT24X20

Platinum

Platinum Hardware Package

		Height						
		8'	10'	12'	14'	16'	18'	20'
Width	20'	SPT20X8	SPT20X10	SPT20X12	SPT20X14	SPT20X16	SPT20X18	SPT20X20
	22'	SPT22X8	SPT22X10	SPT22X12	SPT22X14	SPT22X16	SPT22X18	SPT22X20
	24'	SPT24X8	SPT24X10	SPT24X12	SPT24X14	SPT24X16	SPT24X18	SPT24X20

Other Sizes Available

Headroom Requirements

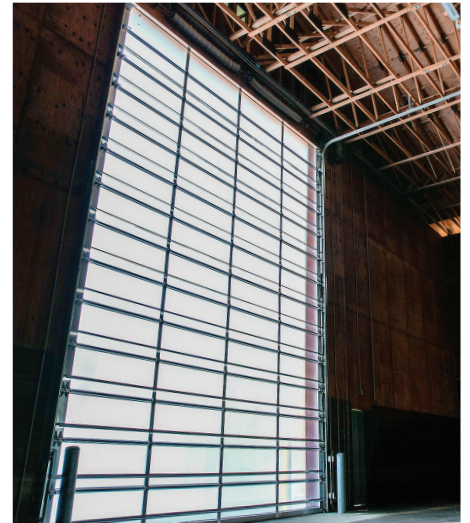
Standard Lift

3" Track- 15" Radius- 16" Up to 12' high door (400-12 Drums)
 3" Track- 15" Radius- 18" Up to 12' high door (5250-18 Drums)
 3" Track- 15" Radius- 19-1/2" Up to 32' high door (800-32 Drums)

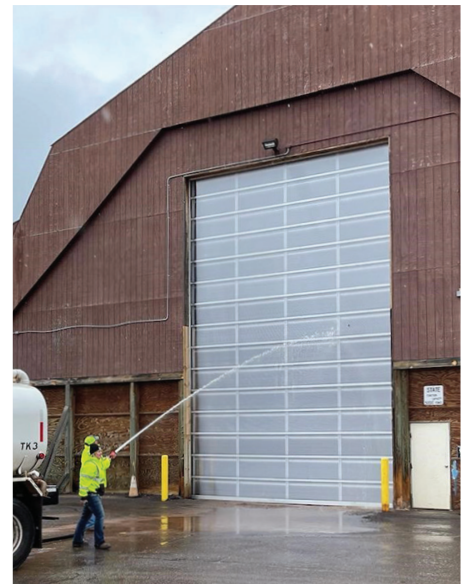
Highlift

3" Track- 15" Radius- Door Ht. + Highlift + 12"

Add for Drawbar Operator - 4"



The Goliath model of our Survivor Polycarbonate Doors feature an extra heavy-duty bottom rail and a large hat strut that adds the extra level of structural integrity that is required for extra wide and/or extra tall polycarbonate door systems.



A great choice for large washdown bays, salt sheds, fertilizer operations and other wet or corrosive applications where light transmission is important.

SPECIALTY GARAGE DOORS

UltraClear™

Full-Vision Garage Doors



Made In U.S.A.

The Full Vision Door With Authentic Value

Unsurpassed Durability

Constructed of the most advanced materials available. Ultraclear™ full-vision doors deliver state-of-the-art features to provide you with maximum durability in both standard and demanding applications.

Reliable Operation

Designed for high-use applications, Ultraclear™ doors feature a better system design and superior hardware that ensures reliable operation year-after-year.

Low Maintenance

Engineered and manufactured for minimal maintenance and service. Reduces annual costs and delivers a better overall value for your operation.

Attractive

Distinct full-vision appearance with insulated glass panels enhance the curb appeal of your building and allows for complete visibility. These aesthetics strengthen the promotion of your business's services and improves your overall image. Provides round-the-clock customer and employee comfort with clear glass panels.

Complete Weather Protection

Protects customers, vehicles, building interior and equipment from wind, cold weather and other elements. Choose from single pane or insulated glass panels. Panels are fully-gasketed and sealed for complete climate protection.



Top Quality Section Construction

5/8" Insulated Glass Panels

Sealed insulated 5/8" tempered glass or acrylic glazing provides maximum see-through visibility and exceptional strength.

Aluminum Alloy Frame

Corrosion resistant aluminum stiles with beveled rails provide a strong, durable frame that naturally sheds moisture.

4" heavy duty bottom rail ensures bottom section integrity.

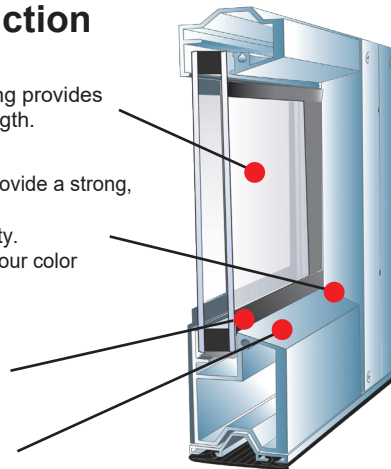
Available in powdercoat or anodized finishes to match your color theme. (Mill finish standard)

Panel Gasket

Flexible gasketed frame seals glass from the exterior elements and prevents air infiltration.

Beveled Aluminum Rails

Beveled tongue & groove meeting rails shed moisture and eliminate watertraps.



Gold

DELUXE MODEL

HARDWARE FEATURES

- Hinges/Hardware: 12 ga. 304 Stainless
- Track: 3" Heavy Duty 12 ga. Galvanized Steel
- Bearing Plates: 12 ga. 304 Stainless
- Shaft: Solid, Keyed 303 Stainless
- Drums: Specialty Coated
- Couplers: Specialty Coated
- Bearings: Greaseable, Stainless
- Cable: 5/32" Stainless
- Rollers: Magnum™ Original
- Fasteners: Stainless/Specialty Coated
- Torsion Springs - Galvanized Steel

Silver

COMPETITIVE MODEL

HARDWARE FEATURES

- Hinges/Hardware: 11 ga. Galvanized
- Track: 3" Heavy Duty 12 ga. Galvanized Steel
- Bearing Plates: 11 ga. Galvanized
- Shaft: Solid, Keyed Galvanized
- Drums: Die Cast Aluminum
- Couplers: Painted Cast Iron
- Bearings: Greaseable, Standard
- Cable: 5/32" Stainless
- Rollers: Magnum™ Original
- Fasteners: Galvanized Steel
- Torsion Springs - Galvanized Steel

Bronze

BASIC MODEL

HARDWARE FEATURES

- Hinges/Hardware: 14 ga. Galvanized
- Track: 2" 14 ga. Galvanized Steel
- Bearing Plates: 11 ga. Galvanized Steel
- Shaft: Hollow, Galvanized Steel
- Drums: Die Cast Aluminum
- Bearings: Freeway, Standard
- Cable: 5/32" Galvanized Steel
- Rollers: 2" Commercial Steel Rollers
- Fasteners: Galvanized Steel
- Torsion Spring Models- Galvanized Steel

SPECIALTY GARAGE DOORS



Includes:
High Cycle Rust Resistant
Torsion Spring System

Bronze

Bronze Hardware Package

		Height			
		8'	10'	12'	14'
Width	10'	UCHDBT10X8	UCHDBT10X10	UCHDBT10X12	UCHDBT10X14
	12'	UCHDBT12X8	UCHDBT12X10	UCHDBT12X12	UCHDBT12X14
	14'	UCHDBT14X8	UCHDBT14X10	UCHDBT14X12	UCHDBT14X14

Silver

Silver Hardware Package

		Height			
		8'	10'	12'	14'
Width	10'	UCHDST10X8	UCHDST10X10	UCHDST10X12	UCHDST10X14
	12'	UCHDST12X8	UCHDST12X10	UCHDST12X12	UCHDST12X14
	14'	UCHDST14X8	UCHDST14X10	UCHDST14X12	UCHDST14X14

Gold

Gold Hardware Package

		Height			
		8'	10'	12'	14'
Width	10'	UCHDGT10X8	UCHDGT10X10	UCHDGT10X12	UCHDGT10X14
	12'	UCHDGT12X8	UCHDGT12X10	UCHDGT12X12	UCHDGT12X14
	14'	UCHDGT14X8	UCHDGT14X10	UCHDGT14X12	UCHDGT14X14

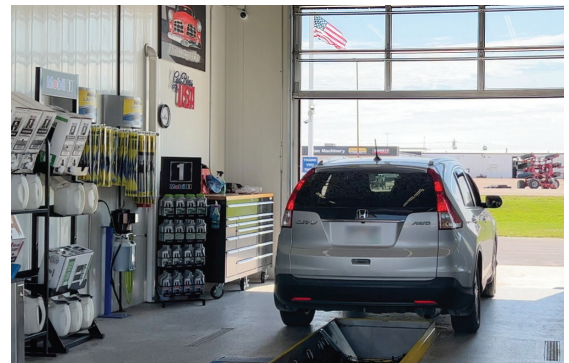
Ultraclear Doors are also available with 5/8" Insulated Acrylic Panels. Platinum Hardware Packages are also available. Please call for details.



Made In U.S.A.

Standard Features

- Clear, Safe, 5/8" Tempered Glass Panels
- Beveled Aluminum Stiles & Rails- No Watertraps!
- 3" Angle Mounted Track
- Extended 1" Solid Keyed Shaft
- Headplates On Most Highlift Track Configurations
- Up to 100,000 High Cycle Springs
- Bottom Rubber Bulb Weatherseal



Attractive Ultraclear full vision garage doors are the clear choice for lube bay and other automobile service centers where reliability, durability and that professional see-through visibility are important.

Headroom Requirements

Standard Lift

3" Track- 15" Radius- 18" (up to 18' high doors)

2" Track- 15" Radius- 16"

2" Track- 12" Radius- 13"

High Lift

3" Track- 15" Radius- Door Ht. + Highlift + 12"

2" Track- 15" Radius- Door Ht. + Highlift + 11"

Vertical Lift

3" Track- Door Ht. + 18"

2" Track- Door Ht. + 18"

Low Headroom

3" Track- Front Mount- 12"

3" Track- Rear Mount- 9"

2" Track- Front Mount- 10"

2" Track- Rear Mount- 6-1/2"

Add for Drawbar Operator - 4"

SPECIALTY GARAGE DOORS

Insulated Washbay Doors- Torsion Spring Models



Includes:

High Cycle Rust Resistant
Torsion Spring System

Designed for high use, high moisture, and other tough environments that require a heavy duty insulated section.

Providing you with durability, security, energy saving as well as exceptional appearance, our 3" insulated washbay doors provide you a sandwich-type, high-strength door product that has maximum thermal protection, corrosion-resistance and very minimal moisture absorption. Our insulated washbay garage doors can be combined with our special hardware packages to create the door system that matches your buildings' individual needs.

Standard Features

- 3" Extruded Polystyrene Insulation- R-17
- 26 ga. Pebble Texture Steel Skin
- Five Section Colors to Choose From
- Tongue and Groove Meeting Rails
- 3" Angle Mounted Track
- Extended 1" Solid Keyed Shaft
- Headplates On Highlift Track Configurations
- Up to 100,000 High Cycle Springs
- Bottom Vinyl Bulb Weatherseal

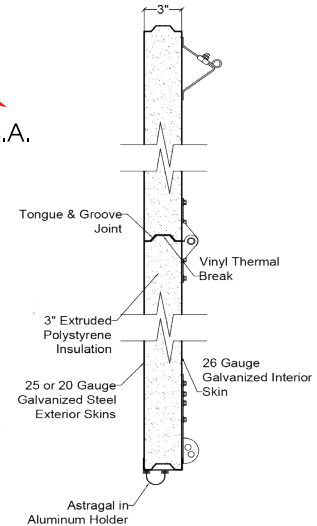
Silver

Silver Hardware Package

		Height				
		8'	10'	12'	14'	16'
Width	10'	M3ST10X08	M3ST10X10	M3ST10X12	M3ST10X14	M3ST10X16
	12'	M3ST12X08	M3ST12X10	M3ST12X12	M3ST12X14	M3ST12X16
	14'	M3ST14X08	M3ST14X10	M3ST14X12	M3ST14X14	M3ST14X16
	16'	M3ST16X08	M3ST16X10	M3ST16X12	M3ST16X14	M3ST16X16



Made In U.S.A.



Gold

Gold Hardware Package

		Height				
		8'	10'	12'	14'	16'
Width	10'	M3GT10X08	M3GT10X10	M3GT10X12	M3GT10X14	M3GT10X16
	12'	M3GT12X08	M3GT12X10	M3GT12X12	M3GT12X14	M3GT12X16
	14'	M3GT14X08	M3GT14X10	M3GT14X12	M3GT14X14	M3GT14X16
	16'	M3GT16X08	M3GT16X10	M3GT16X12	M3GT16X14	M3GT16X16

Platinum

Platinum Hardware Package

		Height				
		8'	10'	12'	14'	16'
Width	10'	M3PT10X08	M3PT10X10	M3PT10X12	M3PT10X14	M3PT10X16
	12'	M3PT12X08	M3PT12X10	M3PT12X12	M3PT12X14	M3PT12X16
	14'	M3PT14X08	M3PT14X10	M3PT14X12	M3PT14X14	M3PT14X16
	16'	M3PT16X08	M3PT16X10	M3PT16X12	M3PT16X14	M3PT16X16

Headroom Requirements

Standard Lift

- 3" Track- 15" Radius- **18"** (up to 18' high doors)
- 2" Track- 15" Radius- **16"**
- 2" Track- 12" Radius- **13"**

High Lift

- 3" Track- 15" Radius- **Door Ht. + Highlift + 12"**
- 2" Track- 15" Radius- **Door Ht. + Highlift + 11"**

Vertical Lift

- 3" Track- **Door Ht. + 18"**
- 2" Track- **Door Ht. + 18"**

Low Headroom

- 3" Track- Front Mount- **12"**
- 3" Track- Rear Mount- **9"**
- 2" Track- Front Mount- **10"**
- 2" Track- Rear Mount- **6-1/2"**
- Add for NuMax Operator - **6"**

SPECIALTY GARAGE DOORS

Full Vision Sections & Window Lites



Multiple Full Vision Sections

Polycarbonate Full Vision Sections

Add full visibility in and out of your Survivor or Goliath Polycarbonate garage door with our clear 5/8" insulated full vision sections. The sections are constructed with two high-quality, 1/8" acrylic lites with an air-space for insulation, maximum visibility, comfort and security.

Door Width			
10'	12'	14'	16'
FVP10	FVP12	FVP14	FVP16



5/8" Full Vision Section

Insulated Washbay Door Window Lites



24" x 7" Window Lite

Window Lites	Door Width			
	10'	12'	14'	16'
# of Lites Available	3	3	4	5

Part #	Description
3ESG-24X7	24" x 7"-1/2" Ins. Glass
3ESG-24X12	24" x 12"-1/2" Ins. Glass
3ESG-24X15	44" x 15"-1/2" Ins. Glass
3ESG-FVS	Full Vision Sections- 1/2" Insulated Glass



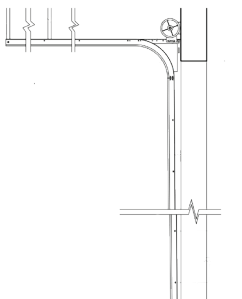
24" x 12" Window Lite

Track Configurations

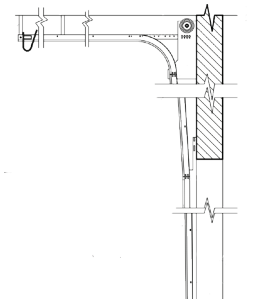
Survivor, Ultraclear and Insulated Washbay doors are typically ordered with either standard lift or highlift track configurations with an inside angle jamb mounting type. This design is popular because it meets the needs of most situations and delivers a durable, reliable and smooth operating door system.

In some cases, these two basic track configurations are not ideal due to the building design or construction features, its contents, purpose or use.

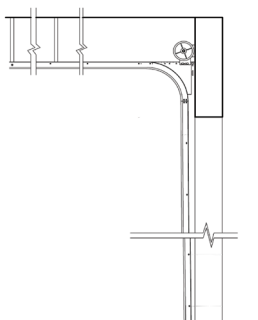
Numerous customized track configurations are available to make the best of the building space; considering both the spacial and structural details of the building and any other operational needs. Choose from numerous custom track designs ranging from pitched/incline designs, dual shaft setups, combinations, as well as a number of additional jamb mounting types. Just let us know your requirements and let us go to work for you to choose the best one for your situation.



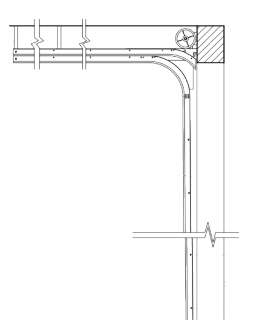
Standard Lift



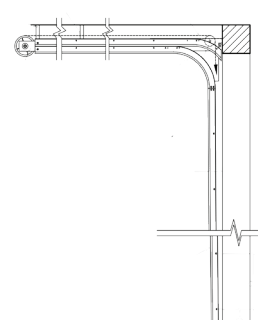
Highlift



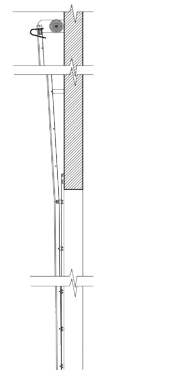
Extended Highlift



Low-Headroom (Front)



Low-Headroom (Rear)



Full Vertical Lift

SPECIALTY GARAGE DOORS

Specialty Garage Door Options

Specialty Roller/Torsion Spring Upgrades

Magnum Supreme™ Rollers (SP) Upgrade

with Stainless Steel Bearings

Upgrade your door system to extreme condition Magnum Supreme rollers for Gold or Silver models. For those extremely punishing areas that need the extra corrosion resistance.

Door Height				
8'	10'	12'	14'	16'
UPG-RMSP-08	UPG-RMSP-10	UPG-RMSP-12	UPG-RMSP-14	UPG-RMSP-16

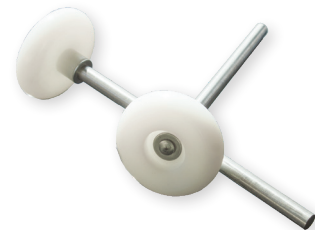


Magnum SP Roller Upgrades

Bearingless Roller Upgrade

Upgrade to Bearingless Garage Door Rollers on Gold, Silver or Platinum models. For polycarbonate doors in situations where they are preferred.

Door Height				
8'	10'	12'	14'	16'
UPG-RBL-08	UPG-RBL-10	UPG-RBL-12	UPG-RBL-14	UPG-RBL-16



Bearingless Roller Upgrades

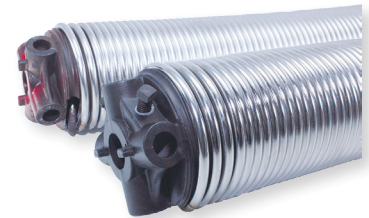
Torsion Spring Upgrades

Stainless Steel Torsion Spring Upgrade

Upgrade your galvanized torsion spring model doors to our high-quality, rust-resistant stainless steel torsion springs.

Great for those extra nasty or corrosive areas!

Part #	Description
UPG-SSPRGS	Upgrade, Stainless Steel Torsion Springs



Stainless Steel Spring Upgrade

Angle Iron/Exterior Locks

Backhang and other support materials are available as well as exterior locks for your door system.

Pre-punched angle iron available in either stainless or galvanized steel.

Exterior locks are available as an option for Survivor or Ultraclear doors that are built at the factory.

Part #	Description
PAI125-08	Angle Iron, 14 ga., Galvanized, 8', 1-1/4" x 1-1/4"
PAI220-10	Angle Iron, 12 ga., Galvanized, 10', 2" x 2"
PAS112-08	Angle Iron, 12 ga., Stainless Steel, 8', 1-1/2" x 1-1/2"
PAS112-10	Angle Iron, 12 ga., Stainless Steel, 10', 1-1/2" x 1-1/2"
PAS220-08	Angle Iron, 12 ga., Stainless Steel, 8', 2" x 2"
PAS220-10	Angle Iron, 12 ga., Stainless Steel, 10', 2" x 2"
OSL10	Outside Lock and Handle- Requires FV Center Stile



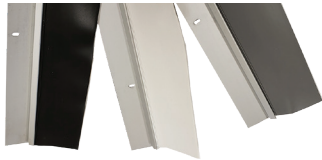
Stainless Steel Angle Iron



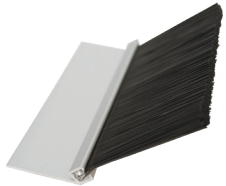
Made In U.S.A.

SPECIALTY GARAGE DOORS

Specialty Garage Door Options



Aluminum/Vinyl



Brush Seal



Dual Contact Top Seal

Perimeter and Header Seals

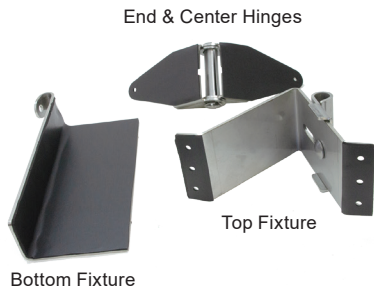
Choose from a number of header and jamb weatherstrips to seal up the perimeter of your door.

Part #	Description
AV412G-XX	1-1/4" x 45° Aluminum, 2" Vinyl Weatherseal, Grey, 10', 12', 14' or 16'
AV412BL-XX	1-1/4" x 45° Aluminum, 2" Vinyl Weatherseal, Black, 10', 12', 14' or 16'
AV412W-XX	1-1/4" x 45° Aluminum, 2" Vinyl Weatherseal, White 10', 12', 14' or 16'
CS100 (B or W)	PVC Extruded Vinyl Climate Seal (Brown or White) Other colors available
BPS155-XX	1-1/2" Straight Brush Weatherseal, 1-1/2" Polypropylene Brush
BPS152-XX	1-1/2" Straight Brush Weatherseal, 2" Polypropylene Brush
BP4125-XX	1-1/4" x 45 Angle Brush Weatherseal, 1-1/2" Polypropylene Brush
BP4122-XX	1-1/4" x 45 Angle Brush Weatherseal, 2" Polypropylene Brush
TS14-XX	Dual Contact Top Seal Installed, 8', 10', 12', 14', 16'
TAOZ1058-100	#10 x 5/8" Self Drilling Screw, 100 pcs/each

Hinge Gasket Kits

Add neoprene hinge gaskets under your stainless hinges and face hardware for additional protection against bi-metallic corrosion.

All kits are specified by the number of door sections and panels and include gaskets for top fixtures, bottom brackets, end hinges and center hinges.



End & Center Hinges

Top Fixture

Bottom Fixture

Part #	Description
HGASKS-XX	Hinge Gasket Kit, Single End Style
HGASKD-XX	Hinge Gasket Kit, Double End Style

-XX (First X= Number of Sections Second X= # of Panels)

Conveyor Cutouts For Polycarbonate Doors

Add a conveyor cutout or two to your door for your tunnel wash or other obstruction. Just fill out our survey and we'll build it right at the factory.



Single Cut-out

Part #	Description
CCO10	Single Cut-Out- One per Door - Please specify dimensions
CCO20	Double Cut-Out- Two per Door - Please specify dimensions

Door Packaging

When we prepare your product for shipment we take the utmost care to make sure it arrives on your location in perfect shape. Our packaging options are listed below and will be added to the cost of all shipments unless otherwise noted.



Heavy Duty Packaging

Description
Heavy Duty Packaging For LTL Shipment (Includes Pallet) Polycarbonate Doors- Survivor & Goliath
Heavy Duty Packaging For LTL Shipment (Includes Pallet) Glass Doors
Cardboard Packaging Full Cardboard Wrap Only- For customer pickups only.

SPECIALTY GARAGE DOORS

Specialty Garage Door Options

Powder Paint or Anodized Door Sections



Custom Frame Finishes

Add additional durability and upgrade the appearance of your Survivor Polycarbonate or Ultraclear Garage Doors with our great-looking powder painted or anodized frames. These doors are normally provided with an aluminum mill finish.

Choose from a variety of stock colors along an almost unlimited number of custom colors to compliment or match your building or branding color theme.

Stock Powderpaint Colors



Powderpaint Finish						
Door Height						
Width		8'	10'	12'	14'	16'
	10'	UPG-PPAINT-10X08	UPG-PPAINT-10X10	UPG-PPAINT-10X12	UPG-PPAINT-10X14	UPG-PPAINT-10X16
	12'	UPG-PPAINT-12X08	UPG-PPAINT-12X10	UPG-PPAINT-12X12	UPG-PPAINT-12X14	UPG-PPAINT-12X16
	14'	UPG-PPAINT-14X08	UPG-PPAINT-14X10	UPG-PPAINT-14X12	UPG-PPAINT-14X14	UPG-PPAINT-14X16
	16'	UPG-PPAINT-16X08	UPG-PPAINT-16X10	UPG-PPAINT-16X12	UPG-PPAINT-16X14	UPG-PPAINT-16X16

Powderpainted frames are provided with TGIC Polyester baked-on powder. This option provides a smooth, great-looking appearance and adds great weatherability and corrosion resistance in one great finish.

Anodized Finish						
Door Height						
Width		8'	10'	12'	14'	16'
	10'	UPG-ANOD-10X08	UPG-ANOD-10X10	UPG-ANOD-10X12	UPG-ANOD-10X14	UPG-ANOD-10X16
	12'	UPG-ANOD-12X08	UPG-ANOD-12X10	UPG-ANOD-12X12	UPG-ANOD-12X14	UPG-ANOD-12X16
	14'	UPG-ANOD-14X08	UPG-ANOD-14X10	UPG-ANOD-14X12	UPG-ANOD-14X14	UPG-ANOD-14X16
	16'	UPG-ANOD-16X08	UPG-ANOD-16X10	UPG-ANOD-16X12	UPG-ANOD-16X14	UPG-ANOD-16X16

Anodized frames use a colored or clear .70 mil finish for that extra protection and eye-catching curb appeal you want. Call for colors and availability. Specifications (Aluminum Institute) **Clear-** A-M10C22A41) **Colored-** AA-M1 0C22A44

Looking for colored polycarbonate panels instead of our standard clear construction?

Give us a call, we have other polycarbonate colors available!

SPECIALTY GARAGE DOORS

Specialty Garage Door Options

Operator Preparation/Misc.



Z-Strut



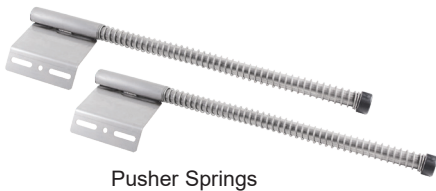
Stainless Strut



Galvanized Strut

Top Section/ Reinforcement Struts

Aluminum Z-Struts		Stainless Steel Struts		Hemmed Galvanized Steel Struts	
Part #	Description	Part #	Description	Part #	Description
ZSTRUT-10	Aluminum Z Strut, 10'	SS-STRUT-10	304 Stainless Steel Strut, 2-1/2", 10'	ST3-10	3" Hemmed Galvanized Strut, 10'
ZSTRUT-12	Aluminum Z Strut, 12'	SS-STRUT-12	304 Stainless Steel Strut, 2-1/2", 12'	ST3-12	3" Hemmed Galvanized Strut, 12'
ZSTRUT-14	Aluminum Z Strut, 14'	SS-STRUT-14	304 Stainless Steel Strut, 2-1/2", 14'	ST3-14	3" Hemmed Galvanized Strut, 14'
ZSTRUT-16	Aluminum Z Strut, 16'	SS-STRUT-16	304 Stainless Steel Strut, 2-1/2", 16'	ST3-16	3" Hemmed Galvanized Strut, 16'
ZSTRUT-XX	Aluminum Z Strut, 18'-30'	SS-STRUT-XX	304 Stainless Steel Strut, 18'-30'	ST3-XX	3" Hemmed Galvanized Strut, 18'-30'



Pusher Springs



Leaf Bumpers



Made In U.S.A.

Pusher Springs/Leaf Bumpers

Part #	Description
SPG15	15" Pusher Springs, Galvanized- 27" O.L
SPS15	15" Pusher Springs, Stainless Steel- 27" O.L
SL100	Leaf Bumper with Bracket, Galvanized

Dummy Sections

Required for use with any type of drawbar opener with more than 12" of highlifted track. Features extra polycarbonate door section, hardware, track and springs.

Part #	Description
DUMMYSECTION	Dummy Section Upgrade
Standard dummy section sizes- 18", 21" & 24" high. Other custom sizes are available.	

Mechanical Room/Attic Application Kits

Mechanical Room Application Kits

Silver Model

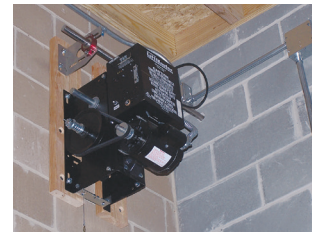
- 1 - 5' Keyed Galvanized Shaft
- 2 - Universal Galvanized Brg. Plates
- 2 - Standard Greaseable Brgs
- 1 - Painted Shaft Coupler
- 2 - 1/4" Galvanized Keys

Gold/Platinum Model

- 1 - 5' Keyed Stainless Steel Shaft
- 2 - Universal Stainless Steel Brg. Plates
- 2 - Stainless Steel Greaseable Brgs
- 1 - Specialty Coated Shaft Coupler
- 2 - 1/4" Stainless Steel Keys



Attic Kit



Mechanical Room Kit

Part #	Description
MRS5	5' Silver Mechanical Room Kit
MRG5	5' Gold/Platinum Mechanical Room Kit
MRA8-N	Attic Application Kit, (8'- #50 Nickel Plated Chain)
MRA8-SS	Attic Application Kit, (8'- #50 Stainless Steel Chain)

SPECIALTY GARAGE DOORS

Replacement Door Components

Single Polycarbonate Replacement Sections

	10'2"	12'2"	14'2"	16'2"
18"	SECTS122X18 (I or B)	SECTS146X18 (I or B)	SECTS170X18 (I or B)	SECTS194X18 (I or B)
21"	SECTS122X21 (I or B)	SECTS146X21 (I or B)	SECTS170X21 (I or B)	SECTS194X21 (I or B)
24"	SECTS122X24I (I or B)	SECTS146X24 (I or B)	SECTS170X24 (I or B)	SECTS194X24 (I or B)

For Double End Stile Doors add "D" as in example SECTD194x24I.

Use "I" to designate intermediate sections and "B" for bottom sections as in example above.



Fit all national brand polycarbonate carwash door brands. Features 2" thick frame with tongue and groove meeting rails and 3" wide stiles. Polycarbonate sections includes 5/8" 5X-Wall polycarbonate with panel gasket and between section seals. Full Vision sections feature 5/8" insulated acrylic instead of multi-wall polycarbonate.

Bottom sections include aluminum bottom retainer and bulb seal.

Single Full Vision Thermal Acrylic Replacement Sections

	10'2"	12'2"	14'2"	16'2"
18"	SECTSFVP122X18	SECTSFVP146X18	SECTSFVP170X18	SECTSFVP194X18
21"	SECTSFVP122X21	SECTSFVP146X21	SECTSFVP170X21	SECTSFVP194X21
24"	SECTSFVP122X24	SECTSFVP146X24	SECTSFVP170X24	SECTSFVP194X24

Section Components

Taped Polycarbonate

Description
Polycarbonate Sheet- Taped (Specify Length & Width)

Rails

Part #	Description
BRXXX (096-30)	Aluminum Bottom Rail- 8'0"- 16'2"
TRXXX 096-30)	Aluminum Top Rail

End Stiles

Part #	Description
ESM24	24" Aluminum End Stile
ESM21	21" Aluminum End Stile
ESM18	18" Aluminum End Stile

Center Stiles

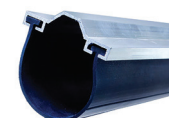
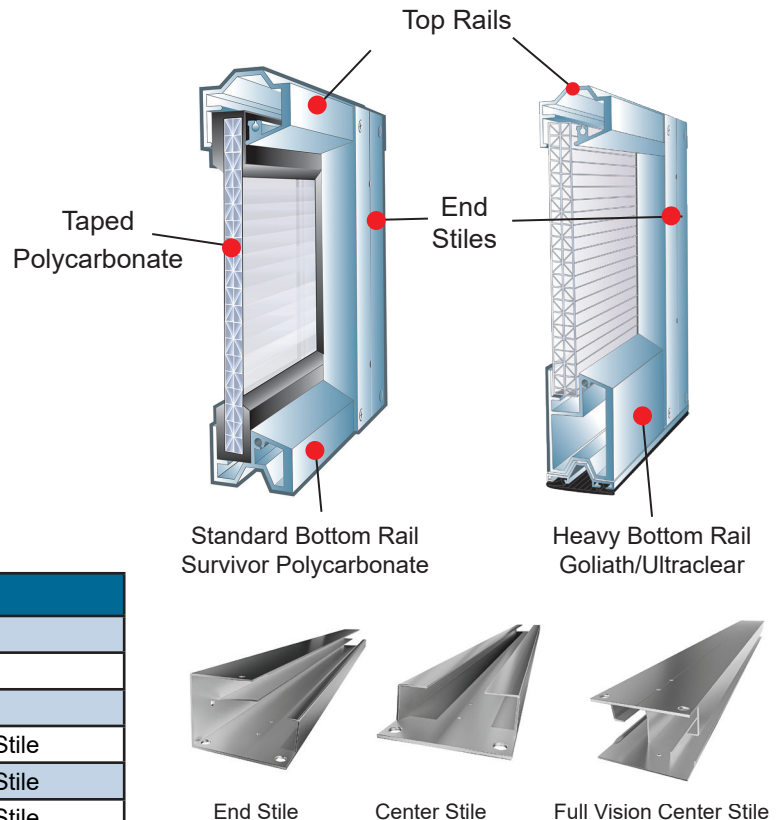
Part #	Description
CSM24	24" Aluminum Center Stile
CSM21	21" Aluminum Center Stile
CSM18	18" Aluminum Center Stile
CSFM24	24" Aluminum Full Vision/Glass Center Stile
CSFM21	21" Aluminum Full Vision/Glass Center Stile
CSFM18	18" Aluminum Full Vision/Glass Center Stile

Bottom Seal/Aluminum Retainers

Part #	Description
WRG-XX (10-16)	Bottom Aluminum Bulb Seal Retainer (10'2"-16'2")
WRR400-V	Bottom Vinyl Bulb Seal

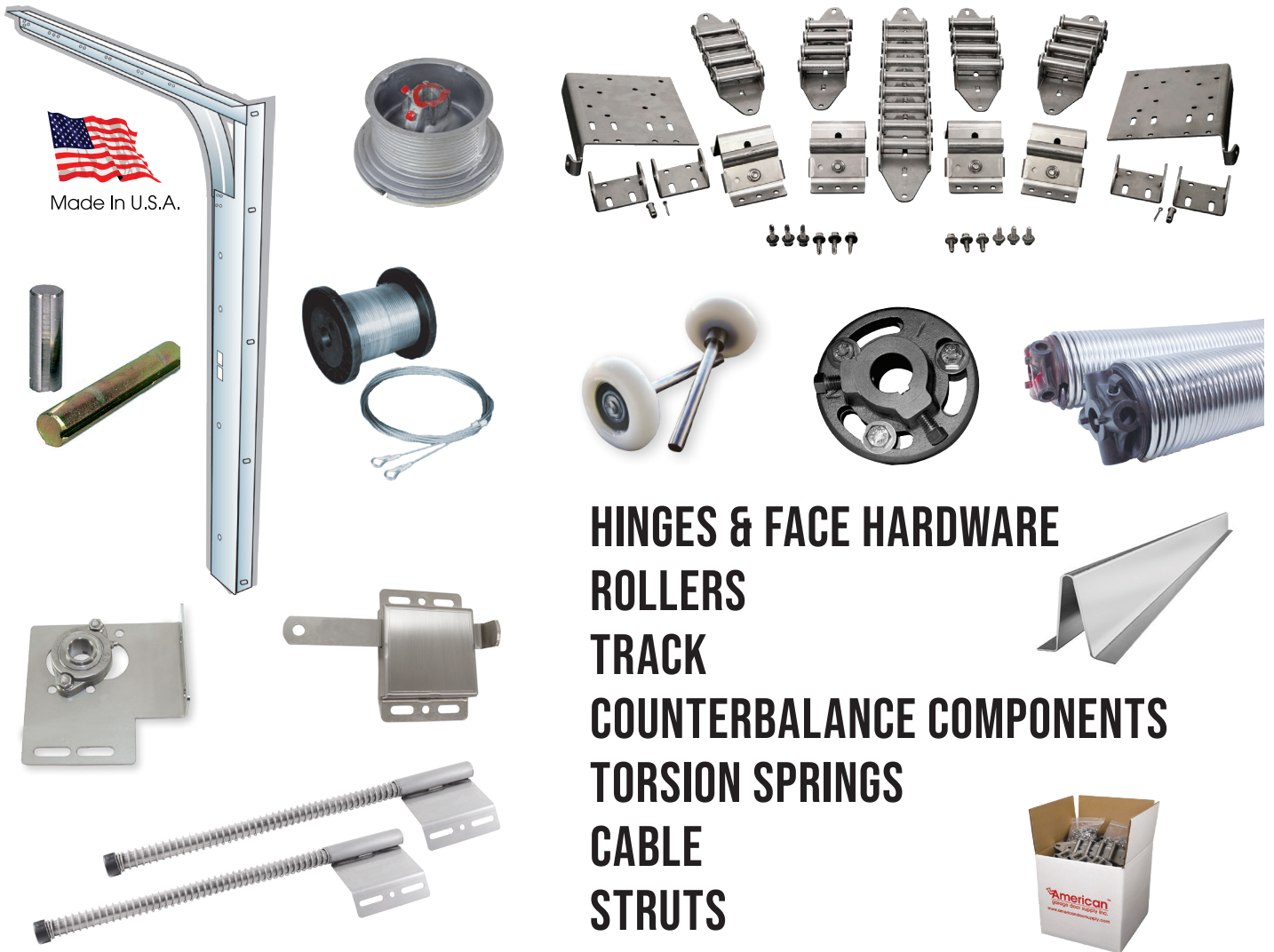
Section Component Identification

Center Stiles- Not Shown



Bulb Seal Retainer & Seal

GARAGE DOOR HARDWARE



HINGES & FACE HARDWARE
ROLLERS
TRACK
COUNTERBALANCE COMPONENTS
TORSION SPRINGS
CABLE
STRUTS

Stainless steel, specialty and standard hardware

DOOR HARDWARE



Stainless Steel. Ready for the Challenge.



Made In U.S.A.

Our Stainless steel and other specialty garage door hardware keeps doors in high-moisture and other extreme environments running safely and reliably. Choosing these customized door hardware products equates to more days up and running. It also means saving valuable time and money down the road.

Using stainless steel & other specialty hardware products improves day-to-day dependability and exponentially increases the longevity of your garage doors by using special materials and proven designs that minimize the effects that corrosion can inflict on the door hardware. The less rust and corrosion, the less hardware failure and malfunction that occurs. This is especially important with frequently cycled garage door systems or ones that are highly relied upon.

Garage door hardware produced with tough, durable stainless steel and other specialty materials also reduces maintenance, service and the unexpected costs of downtime. Ultimately, this delivers an excellent value over time providing you with the peace of mind that your garage doors will operate safely and reliably even in the most punishing applications.

For garage door systems to survive and thrive under extreme conditions, use our stainless steel and other specialty hardware individually for direct replacement or repair on existing garage door or purchase them in a tailored package to equip your favorite door with a customized hardware package that works best for your application.

Universal Design

Fits almost any sectional door.
Easy to install!

Rust-Resistant

Manufactured with high quality 304 stainless steel for unequalled corrosion resistance and durability in any corrosive applications.

Wear and Crack Resistant

Designed and manufactured for dependability in punishing high use environments.

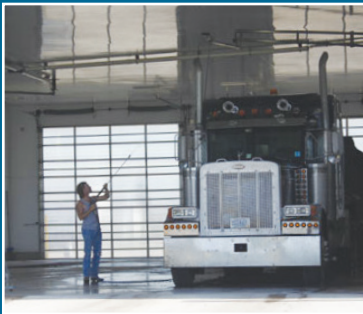
Clean

Excellent in any clean room or wash down area requiring minimal bacteria growth.

Tough and Reliable

Ideal for Any Corrosive or Abusive Environment!

- Car/Truck/Bus/Equipment & Other Washdown Areas
- Fish/Seafood Storage
- Livestock Barns
- Dairies/Creameries
- Food Processing Plants
- Vegetable Storage Facilities
- Agricultural Facilities
- Chemical & Fertilizer Plants
- Slaughterhouses
- Water/Waste Treatment Plants
- Cement Yards
- Poultry Farms and Processing
- Salt Sheds/Brine Mixing
- Material Handling Areas
- Lakes/Rivers/Waterways
- Mining Operations
- Cold Storage Applications



Call 800-233-1487 or go online to stainlessgaragedoorparts.com

DOOR HARDWARE

Hinges & Face Hardware

Stainless Steel Face Hardware

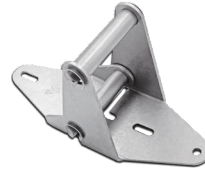
High-quality 304L stainless steel provides clean, tough and rust-resistant durability even in the most brutal applications. Universal hardware fits almost any national brand overhead garage door. Wear and crack-resistant design improves door reliability and prolongs service life in wet, corrosive and dirty conditions.



HS112



HS512



HS1112



HTUS



HTLS

Stainless Steel Garage Door Hinges- 12 ga.	
Part #	Description
HS112	#1 304L Stainless Steel Hinge
HS212	#2 304L Stainless Steel Hinge
HS312	#3 304L Stainless Steel Hinge
HS412	#4 304L Stainless Steel Hinge
HS512	#5 304L Stainless Steel Hinge
HS612	#6 304L Stainless Steel Hinge
HS712	#7 304L Stainless Steel Hinge
HS812	#8 304L Stainless Steel Hinge
HS912	#9 304L Stainless Steel Hinge
HS1012	#10 304L Stainless Steel Hinge
HS1112	#11 304L Stainless Steel Hinge
HS1212	#12 304L Stainless Steel Hinge
HSCC112	304L Stainless Steel Hinge, Comb., C-Style
HSCFV112	304L Stainless Hinge, Full Vision, C-Style
HSO112	#1 304L Stainless Steel 1/2 Hinge, OHD Style
HSO212	#2 304L Stainless Steel 1/2 Hinge, OHD Style
HSO312	#3 304L Stainless Steel 1/2 Hinge, OHD Style
HSO412	#4 304L Stainless Steel 1/2 Hinge, OHD Style
HSO512	#5 304L Stainless Steel 1/2 Hinge, OHD Style



HSCFV112



HSO112



HSCC112



HBS2U

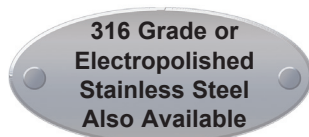


HBS2UD

Stainless Steel Bottom Fixtures- 12 ga.	
Part #	Description
HBS138U	Stainless Steel Bottom fixtures, 1-3/8" Door, 2" or 3" Track. Single End Stile.
HBS2U	Stainless Steel Bottom Fixtures, 1-5/8"-2" Door, 2" or 3" Track, Single End Stile.
HBS3U	Stainless Steel Bottom Fixtures, 3" Door, 2" or 3" Track, Single End Stile.
HBS2UD	Stainless Steel Bottom Fixtures, 1-5/8"-2" Door, 2" or 3" Track, Double End Stile.
HBS3UD	Stainless Steel Bottom Fixtures, 3" Door, 2" or 3" Track, Double End Stile.
HBS23LU	Stainless Steel LHR Bottom Fixtures, 2" or 3" Door, 2" or 3" Track. Single End Stile
HBS23LU-H	Stainless Steel LHR Bottom Brackets, 2" or 3" Door, 2" or 3" Track. Single End Stile, Heavy Duty.
HBS23LUD-H	Stainless Steel LHR Bottom Fixture, 2" or 3" Door, 2" or 3" Track. Double End Stile, Heavy Duty.



Made In U.S.A.



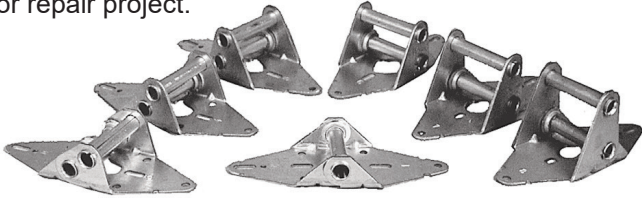
Stainless Steel Top Fixtures- 12 ga.	
Part #	Description
HTUS	Universal Stainless Steel Top Fixture
HTUSH	Universal Stainless Steel Top Fixture, Tall. Use for doors with # 9 or above top hinge
HTLS	Low-Headroom Stainless Steel Top Fixture

DOOR HARDWARE

Galvanized Hinges & Face Hardware

Use our heavy duty galvanized hardware for situations where heavy use is expected and corrosion is at a minimum.

Choose from a large selection of hinges designs, bottom and top brackets as well as fasteners for your next new, retrofit or repair project.



Galvanized Top Fixtures- Heavy Duty 11 ga.

Part #	Description
HTU	Universal Galvanized Steel Top Fixture
HTL	Low Headroom Galvanized Steel Top Fixture

Hinge Screws



Stainless Steel Hinges Screws

Part #	Description
TAOS141W	Stainless Hinge Tek Screws 1/4" x 1" Self-Driller w/ Washer
TAPS1458W	Stainless Hinge Screws 1/4" x 5/8" Self-Threader w/ Washers
LAGS141W	Stainless Wood Lag 1/4" x 1" Washer Head
LAGS14125W	Stainless Wood Lag 1/4" x 1-1/4" Washer Head
LAGS1415W	Stainless Wood Lag 1/4" x 1-1/2" Washer Head

Galvanized Hinges Screws

Part #	Description
TAOZ141W	Galvanized Hinge Tek Screws 1/4" x 1" Self-Driller w/ Washer
TAPZ1458W	Galvanized Hinge Screws 1/4" x 5/8" Self-Threader w/ Washer
TAOZ5161	Galvanized Hinge Tek Screws 5/16" x 1" Self-Driller
TABZ1458	Galvanized Hinge Screws For Steel Doors- Sheet Metal Style, 1/4" x 5/8" AB Type
LAGZ141	Galvanized Steel Wood Lag 1/4" x 1" Hexhead

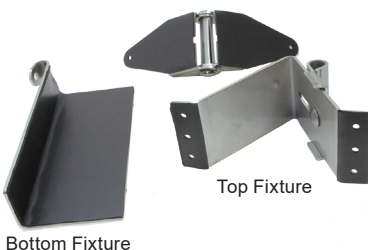
Galvanized Hinges- Heavy Duty 11 ga.

Part #	Description
H111	#1 Galvanized Steel Hinge, 11 ga.
H211	#2 Galvanized Steel Hinge, 11 ga.
H311	#3 Galvanized Steel Hinge, 11 ga.
H411	#4 Galvanized Steel Hinge, 11 ga.
H511	#5 Galvanized Steel Hinge, 11 ga.
H611	#6 Galvanized Steel Hinge, 11 ga.
H711	#7 Galvanized Steel Hinge, 11 ga.
H811	#8 Galvanized Steel Hinge, 11 ga.
H911	#9 Galvanized Steel Hinge, 11 ga.
H1011	#10 Galvanized Steel Hinge, 11 ga.
H1111	#11 Galvanized Steel Hinge, 11 ga.
H1211	#12 Galvanized Steel Hinge, 11 ga.

Galvanized Bottom Fixtures- Heavy Duty

Part #	Description
HB2U	Galvanized Steel Bottom Brackets 1-5/8- 2" Door, 2" or 3" Track
HB2UD	Galvanized Steel Bottom Brackets 1-5/8- 2" Door, 2" or 3" Track
HB3U	Galvanized Steel Bottom Brackets 3" Door, 2" or 3" Track
HB3UD	Galvanized Steel Bottom Brackets 3" Door, 2" or 3" Track

End & Center Hinges



Hinge Gasket Kits

Add neoprene hinge gaskets under your stainless steel hinges and face hardware for additional protection against bi-metallic corrosion.

All kits are specified by the number of door sections and panels. They include gaskets for top & bottom brackets along with center and end hinges.

Part #	Description
HGASKS-XX	Hinge Gasket Kit, Single End Style
HGASKD-XX	Hinge Gasket Kit, Double End Style

-XX (First X= Number of Sections Second X= # of Panels)

DOOR HARDWARE

Hinge & Face Hardware Kits

Pre-made face hardware kits allow you to equip your door with the hinges, face hardware and fasteners it needs. Makes ordering easy for your next new, renovation or repair project.

Offered in either tough stainless steel or heavy duty galvanized steel. Kits include: top and bottom fixtures, center hinges, end hinges and hinge screws for hardware attachment. Kits handle 1-5/8" to 2" door thicknesses and can be ordered for 2 or 3" track sizes. Kits for other door thicknesses are available.



Stainless Steel Face Hardware Kits

Use our convenient stainless steel face hardware kits to equip your favorite garage door with tough, rust-resistant 304L stainless steel hardware. Hardware kits are universal and fit almost any national brand commercial garage door.

Kits include: top and bottom fixtures, center hinges, end hinges and hinge screws) All hardware is heavy duty 12 ga. stainless steel material.

3" Track- Single End Stile					
Sections High	2 Panels	3 Panels	4 Panels	5 Panels	6 Panels
4	FHKS3S-42	FHKS3S-43	FHKS3S-44	FHKS3S-45	FHKS3S-46
5	FHKS3S-52	FHKS3S-53	FHKS3S-54	FHKS3S-55	FHKS3S-56
6	FHKS3S-62	FHKS3S-63	FHKS3S-64	FHKS3S-65	FHKS3S-66
7	FHKS3S-72	FHKS3S-73	FHKS3S-74	FHKS3S-75	FHKS3S-76
8	FHKS3S-82	FHKS3S-83	FHKS3S-84	FHKS3S-85	FHKS3S-86

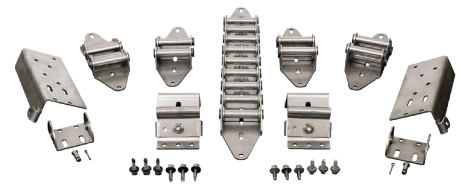
3" Track- Double End Stile					
Sections High	2 Panels	3 Panels	4 Panels	5 Panels	6 Panels
4	FHKS3D-42	FHKS3D-43	FHKS3D-44	FHKS3D-45	FHKS3D-46
5	FHKS3D-52	FHKS3D-53	FHKS3D-54	FHKS3D-55	FHKS3D-56
6	FHKS3D-62	FHKS3D-63	FHKS3D-64	FHKS3D-65	FHKS3D-66
7	FHKS3D-72	FHKS3D-73	FHKS3D-74	FHKS3D-75	FHKS3D-76
8	FHKS3D-82	FHKS3D-83	FHKS3D-84	FHKS3D-85	FHKS3D-86

2" Track- Single End Stile					
Sections High	2 Panels	3 Panels	4 Panels	5 Panels	6 Panels
4	FHKS2S-42	FHKS2S-43	FHKS2S-44	FHKS2S-45	FHKS2S-46
5	FHKS2S-52	FHKS2S-53	FHKS2S-54	FHKS2S-55	FHKS2S-56
6	FHKS2S-62	FHKS2S-63	FHKS2S-64	FHKS2S-65	FHKS2S-66
7	FHKS2S-72	FHKS2S-73	FHKS2S-74	FHKS2S-75	FHKS2S-76
8	FHKS2S-82	FHKS2S-83	FHKS2S-84	FHKS2S-85	FHKS2S-86

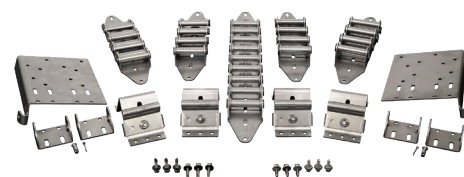
2" Track- Double End Stile					
Sections High	2 Panels	3 Panels	4 Panels	5 Panels	6 Panels
4	FHKS2D-42	FHKS2D-43	FHKS2D-44	FHKS2D-45	FHKS2D-46
5	FHKS2D-52	FHKS2D-53	FHKS2D-54	FHKS2D-55	FHKS2D-56
6	FHKS2D-62	FHKS2D-63	FHKS2D-64	FHKS2D-65	FHKS2D-66
7	FHKS2D-72	FHKS2D-73	FHKS2D-74	FHKS2D-75	FHKS2D-76
8	FHKS2D-82	FHKS2D-83	FHKS2D-84	FHKS2D-85	FHKS2D-86



Made In U.S.A.



Single End Stile



Double End Stile

Order kits by: Track size, # of door sections in height and the # of panels in width.

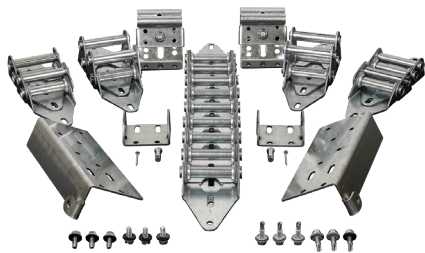
DOOR HARDWARE

Hinges and Face Hardware Kits

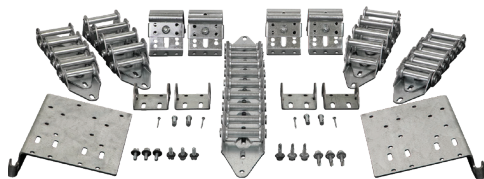
Galvanized Steel Face Hardware Kits

Use our convenient galvanized face hardware kits to equip your sectional overhead garage door.

Kits include: top and bottom fixtures, center hinges, end hinges and self-drilling hinge screws. All hardware is heavy duty 11 ga. steel material.



Single End Stile



Double End Stile



Can't find what you are looking for?
Please call 1-800-233-1487 and let us go to work for you!

3" Track- Single End Stile					
Sections High	2 Panels	3 Panels	4 Panels	5 Panels	6 Panels
4	FHKG3S-42	FHKG3S-43	FHKG3S-44	FHKG3S-45	FHKG3S-46
5	FHKG3S-52	FHKG3S-53	FHKG3S-54	FHKG3S-55	FHKG3S-56
6	FHKG3S-62	FHKG3S-63	FHKG3S-64	FHKG3S-65	FHKG3S-66
7	FHKG3S-72	FHKG3S-73	FHKG3S-74	FHKG3S-75	FHKG3S-76
8	FHKG3S-82	FHKG3S-83	FHKG3S-84	FHKG3S-85	FHKG3S-86

Order kits by: Track size, # of door sections in height and the # of panels in width.

3" Track- Double End Stile					
Sections High	2 Panels	3 Panels	4 Panels	5 Panels	6 Panels
4	FHKG3D-42	FHKG3D-43	FHKG3D-44	FHKG3D-45	FHKG3D-46
5	FHKG3D-52	FHKG3D-53	FHKG3D-54	FHKG3D-55	FHKG3D-56
6	FHKG3D-62	FHKG3D-63	FHKG3D-64	FHKG3D-65	FHKG3D-66
7	FHKG3D-72	FHKG3D-73	FHKG3D-74	FHKG3D-75	FHKG3D-76
8	FHKG3D-82	FHKG3D-83	FHKG3D-84	FHKG3D-85	FHKG3D-86

2" Track- Single End Stile					
Sections High	2 Panels	3 Panels	4 Panels	5 Panels	6 Panels
4	FHKG2S-42	FHKG2S-43	FHKG2S-44	FHKG2S-45	FHKG2S-46
5	FHKG2S-52	FHKG2S-53	FHKG2S-54	FHKG2S-55	FHKG2S-56
6	FHKG2S-62	FHKG2S-63	FHKG2S-64	FHKG2S-65	FHKG2S-66
7	FHKG2S-72	FHKG2S-73	FHKG2S-74	FHKG2S-75	FHKG2S-76
8	FHKG2S-82	FHKG2S-83	FHKG2S-84	FHKG2S-85	FHKG2S-86

2" Track- Double End Stile					
Sections High	2 Panels	3 Panels	4 Panels	5 Panels	6 Panels
4	FHKG2D-42	FHKG2D-43	FHKG2D-44	FHKG2D-45	FHKG2D-46
5	FHKG2D-52	FHKG2D-53	FHKG2D-54	FHKG2D-55	FHKG2D-56
6	FHKG2D-62	FHKG2D-63	FHKG2D-64	FHKG2D-65	FHKG2D-66
7	FHKG2D-72	FHKG2D-73	FHKG2D-74	FHKG2D-75	FHKG2D-76
8	FHKG2D-82	FHKG2D-83	FHKG2D-84	FHKG2D-85	FHKG2D-86

DOOR HARDWARE

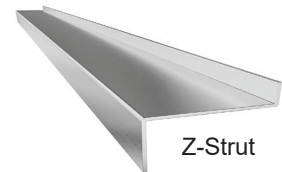
Reinforcement Struts and Angle Iron

Section Reinforcement Struts

Use our tough 304L stainless struts for section reinforcement to prevent deflection or to reinforce your section for drawbar operation. 2-1/2" tall "A" shaped design adds structural integrity to your sections with the best in rust resistance.

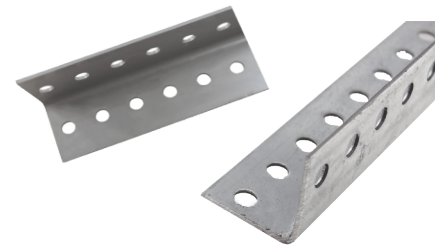
Reinforcement Struts

Stainless Steel Struts	
Part #	Description
SS-STRUT-10	304 Stainless Steel Strut, 2-1/2", 10'
SS-STRUT-12	304 Stainless Steel Strut, 2-1/2", 12'
SS-STRUT-14	304 Stainless Steel Strut, 2-1/2", 14'
SS-STRUT-16	304 Stainless Steel Strut, 2-1/2", 16'
SS-STRUT-XX	304 Stainless Steel Strut, 20'-30'
Aluminum Z-Struts	
Part #	Description
ZSTRUT-10	Aluminum ZStrut, 10'
ZSTRUT-12	Aluminum ZStrut, 12'
ZSTRUT-14	Aluminum ZStrut, 14'
ZSTRUT-16	Aluminum ZStrut, 16'
ZSTRUT-XX	Aluminum ZStrut, 18'



Perforated Angle Iron

Part #	Description
PAI125-08	Angle Iron, 14 ga, Galvanized, 8', 1-1/4" x 1-1/4"
PAI220-10	Angle Iron, 12 ga, Galvanized, 10', 2" x 2"
PAS112-08	Angle Iron, 12 ga, Stainless Steel, 8', 1-1/2" x 1-1/2"
PAS112-10	Angle Iron, 12 ga, Stainless Steel, 10', 1-1/2" x 1-1/2"
PAS220-08	Angle Iron, 12 ga, Stainless Steel, 8', 2" x 2"
PAS220-10	Angle Iron, 12 ga, Stainless Steel, 10', 2" x 2"
OSL10	Outside Lock and Handle
UPG-EXHAUSTPORT	Exhaust Ports-VariouS Sizes



Locks

Part #	Description
LIU-SS	Stainless Steel Inside Slide Lock, #4 finish



Pusher Springs

Part #	Description
SPS15	Stainless Steel Pusher Springs 15" Stainless Steel- 27" O.L



DOOR HARDWARE

Specialty Garage Door Rollers



Made In U.S.A.



The Magnum Difference!

Innovative design, advanced engineering and superior materials make Magnum garage door rollers the only choice to compliment your high quality door system.

These functionally superb rollers are stronger, quieter, more maintenance-free and have a higher cycle life than any other garage door roller product in the market.

Magnum garage door rollers are designed to withstand the harshest conditions you can come up with. Sealed precision ball bearing construction provides excellent load rating and bearing seals prevent problem elements from damaging the raceways. Ultra-high density polyethylene tire, stainless steel stem and collar ensures rust-free durability and high strength in any situation.

Specify the original Magnum rollers for any high use, dirty, wet and/or quiet area or choose the new Magnum Supreme for extreme durability in the worst wet and corrosive applications.



Original Magnum™ Car Wash Rollers

Dependable, Quiet and Tough!

Magnum rollers have been a favorite throughout the industry. Sealed bearing design, UHMW tire and stainless steel stem and collar provides excellent life in high use and corrosive environments.

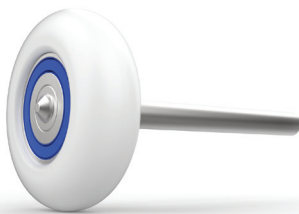


Use for any high cycle, high moisture environment.

Original Magnum™ Rollers

- Bearing: Double-Sealed Precision
- Ball Bearings: High Carbon Chrome Steel
- Raceways: High Carbon Chrome Steel
- Tire: UHMW Polyethylene
- Tire Face: Shielded Inner Face
- Stem: 304 Stainless Steel
- Collar: 304 Stainless Steel

Part #	Description
RMS3147	3" Magnum Rollers (Short Stem- 7/16" x 5-1/2")
RMS3197	3" Magnum Rollers (Long Stem- 7/16" x 9")
RMS2147	2" Magnum Rollers (Short Stem- 7/16" x 5-1/2")
RMS2197	2" Magnum Rollers (Long Stem- 7/16" x 9")



Magnum Supreme™ Extreme Condition Rollers

The Magnum Supreme roller ensures unequalled performance, reliability and maximum durability in the most extreme environments.

The new design feature tough, maintenance-free stainless steel raceways with stainless steel ball bearings that require zero lubrication. Specifically designed for wet, high cycle and corrosive environments; the unique Magnum SP bearing design results in less corrosion and freeze-ups providing quiet, smooth and free-turning operation cycle after cycle.

Other features are high-strength, stainless steel stems and tough UHMW tire with snap-lock design. No snap rings to fail!

Magnum™ Supreme Rollers

- Bearing: Double-Sealed Precision
- Ball Bearings: Stainless Steel
- Raceways: Stainless Steel
- Tire: UHMW Polyethylene
- Tire Face: Shielded Inner Face
- Stem: 304 Stainless Steel
- Collar: 304 Stainless Steel

Use for wet, corrosive or otherwise nasty environments.

Part #	Description
RMSP3147	3" Supreme Rollers (Short Stem- 7/16" x 5-1/2")
RMSP3197	3" Supreme Rollers (Long Stem- 7/16" x 9")
RMSP2147	2" Supreme Rollers (Short Stem- 7/16" x 5-1/2")
RMSP2197	2" Supreme Rollers (Long Stem- 7/16" x 9")

DOOR HARDWARE

Specialty Garage Door Rollers

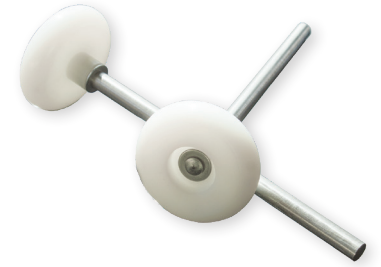
Stainless Steel Bearingless Rollers

Constructed of the finest rust-resistant materials available in the industry, our bearingless rollers are ideal for wet & corrosive applications where durability and reliability are crucial.

Field proven design minimizes door problems associated with rollers and keeps your door functioning quietly and reliably, cycle-after-cycle in any tough application.

Bearingless rollers are ideal for light to medium weight doors in most situations. An excellent product to complement any polycarbonate door package.

Choose our bearingless rollers in high moisture areas, such as car, truck or bus washes, along with marine environments, storage facilities, and many more.



Bearingless Rollers



Bearingless Rollers

Bearing: None
Ball Bearings: None
Raceways: None
Tire: UHMW Polyethylene
Stem: 304 Stainless Steel

Part #	Description
RMSBL3147	3" Bearingless Rollers (Short Stem- 7/16" x 5-1/2")
RMSBL3197	3" Bearingless Rollers (Long Stem- 7/16" x 9")
RMSBL2147	2" Bearingless Rollers (Short Stem- 7/16" x 5-1/2")
RMSBL2197	2" Bearingless Rollers (Long Stem- 7/16" x 9")

Specialty Garage Door Roller Kits

Use our specialty roller kits for your next new, replacement or renovation project.

Select from a number of specialty garage door roller designs for product that best fits your projects conditions.

Just order for the height of your door and the number of end stiles.



Magnum™ Original Roller Kits					
Sealed Bearings	Door Height				
	8'	10'	12'	14'	16'
Single End Stile	RMSKS3-08	RMSKS3-10	RMSKS3-12	RMSKS3-14	RMSKS3-16
Double End Stile	RMSKD3-08	RMSKD3-10	RMSKD3-12	RMSKD3-14	RMSKD3-16

Magnum™ Supreme Roller Kits w/ Stainless Steel Bearing					
Stainless Bearings	Door Height				
	8'	10'	12'	14'	16'
Single End Stile	RMSPKS3-08	RMSPKS3-10	RMSPKS3-12	RMSPKS3-14	RMSPKS3-16
Double End Stile	RMSPKD3-08	RMSPKD3-10	RMSPKD3-12	RMSPKD3-14	RMSPKD3-16

Single end stile kits include four long stem rollers for the top and bottom brackets along with short stem rollers for the balance of the quantity needed.

Double end stile kits include all long stem rollers. (ie. 8' high kits include a total of 10 rollers.)



Single End Stile Kits



Double End Stile Kits

DOOR HARDWARE

Garage Door Track Systems

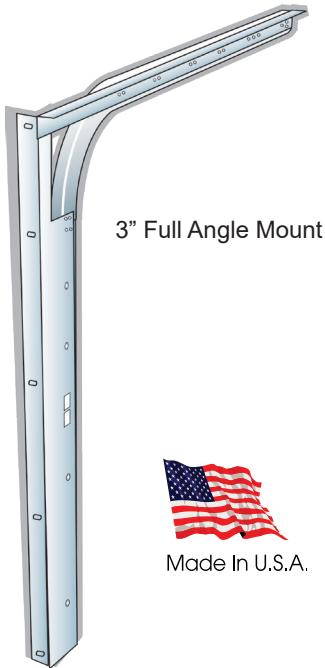
Stainless Steel Garage Door Track

Available in 3-inch (12 ga.) and 2-inch (14-ga.), our stainless steel track products have any type or size of sectional overhead door covered in just about any wet, corrosive or contaminated situation.

Use our heavy duty, 3-inch track size for larger, heavier or high use doors in a commercial or industrial application or use our lighter 2-inch track for light commercial or residential garage doors.

Offering a longer service life than galvanized products, our stainless steel track fits almost any national brand sectional garage door and the radius is completely roll-formed, so you're not dealing with weldments or interrupted door travel.

Constructed with high-quality 304L, FDA-approved stainless steel material for its resistance to rust and corrosion created from moisture or chemical exposures, and for its thermally-stable properties.



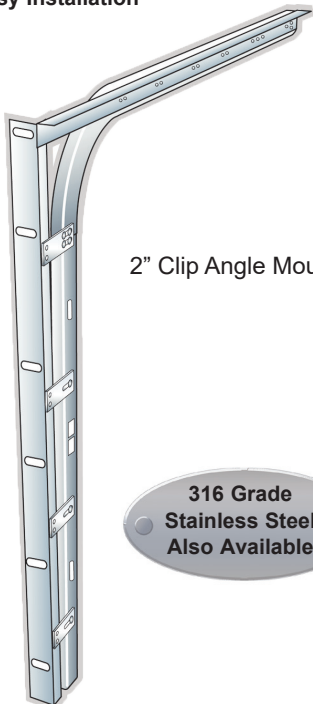
3" Full Angle Mount



Made In U.S.A.

Track Features

- 304L Stainless Steel Construction
- Heavy Duty 12 ga. Material
- Smooth True Radius- No Welded Facets!
- Structurally Sound Full Angle Mount
- Universal- Fits Most Garage Doors
- Proven Quality Designs
- Heavy Duty Materials
- Easy Installation



2" Clip Angle Mount

316 Grade
Stainless Steel
Also Available

3 Inch Stainless Steel Track- 12 ga., Full Angle Mount			
Height	Standard Lift	Highlift w/ Extension	Vertical Lift
8'	TAS308-SL	TAS308-HL	TAS308-VL
10'	TAS310-SL	TAS310-HL	TAS310-VL
12'	TAS312-SL	TAS312-HL	TAS312-VL
14'	TAS314-SL	TAS314-HL	TAS314-VL
16'	TAS316-SL	TAS316-HL	TAS316-VL
18'	TAS318-SL	TAS318-HL	TAS318-VL

2 Inch Stainless Steel Track- 14 ga., Clip Angle Mount			
Height	Standard Lift	Highlift w/Extension	Vertical Lift
8'	TAS208-SL-C	TAS208-HL-C	TAS208-VL-C
10'	TAS210-SL-C	TAS210-HL-C	TAS210-VL-C
12'	TAS212-SL-C	TAS212-HL-C	TAS212-VL-C
14'	TAS214-SL-C	TAS214-HL-C	TAS214-VL-C
16'	TAS216-SL-C	TAS216-HL-C	TAS216-VL-C

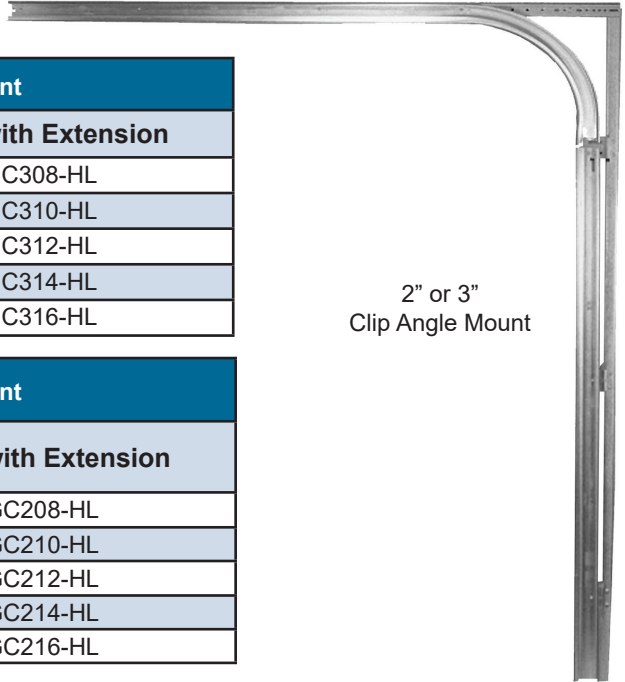
2 Inch Stainless Steel Track- 14 ga., Bracket Mount		
Height	Standard Lift	Highlift w/ Extension
7'	TAS207-SL-B	TAS207-HL-B
8'	TAS208-SL-B	TAS208-HL-B
10'	TAS210-SL-B	TAS210-HL-B
12'	TAS212-SL-B	TAS212-HL-B
14'	TAS214-SL-B	TAS214-HL-B

Headplates and bearing plates sold separately. Please see counterbalance system hardware on pages 30-31

Highlift J-Brackets- add (2) J-Brackets for Highlift models over 48", (4) for over 72"	
Part #	Description
JBSHL-10	J- Bracket, Highlift Support, Stainless, 10", 12 ga.
JBSVL-16	J- Bracket, Highlift/Vertical Support, Stainless, 16", 12 ga.
JBHL-10	J- Bracket, Highlift Support, Galvanized, 10", 12 ga.

DOOR HARDWARE

Galvanized Steel Garage Door Track



3 Inch Galvanized Steel Track- 12 ga., Clip Angle Mount		
Height	Standard Lift	Highlift with Extension
8'	TAGC308-SL	TAGC308-HL
10'	TAGC310-SL	TAGC310-HL
12'	TAGC312-SL	TAGC312-HL
14'	TAGC314-SL	TAGC314-HL
16'	TAGC316-SL	TAGC316-HL

2" or 3"
Clip Angle Mount

2 Inch Galvanized Steel Track- 14 ga., Clip Angle Mount		
Height	Standard Lift	Highlift with Extension
8'	TAGC208-SL	TAGC208-HL
10'	TAGC210-SL	TAGC210-HL
12'	TAGC212-SL	TAGC212-HL
14'	TAGC214-SL	TAGC214-HL
16'	TAGC216-SL	TAGC216-HL

Track Bolts/ Nuts and Lags

Part Number	Description
TBLT1458SS	Track Bolt, 1/4" x 5/8", Stainless Steel
NUTFS14	Flange Nut, 1/4", Stainless Steel
TBLTZ1458	Track Bolt, 1/4" x 5/8" - Galvanized
NUTFZ14	Flange Nut, 1/4", Galvanized
LAG516158P	Wood Lag, 5/16" x 1-5/8", Plated
LAGZ516158	Wood Lag, 5/16" x 1-5/8", Galvanized
LAG5163	Wood Lag, 5/16" x 3", Galvanized

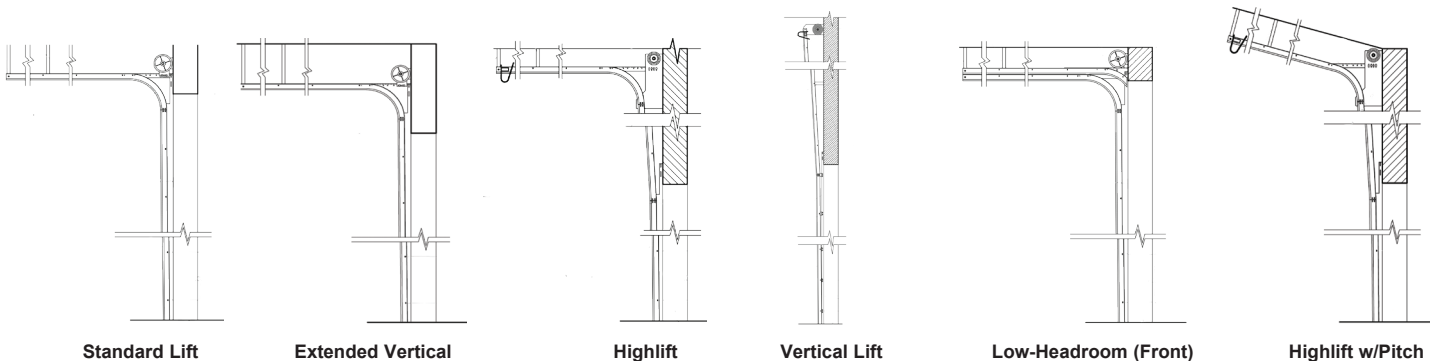


Typical Track Configurations

American Garage Door Supply offers a complete line of garage door track configurations to match your building features and operational requirements. Other custom track configurations available.

Can't find the right configuration for your project?

Give us a call or visit our site at stainlessgaragedoorparts.com for complete details.



Standard Lift

Extended Vertical

Highlift

Vertical Lift

Low-Headroom (Front)

Highlift w/Pitch

DOOR HARDWARE

EQUIP YOUR FAVORITE DOOR WITH STAINLESS STEEL

“Equip Your Favorite Door” hardware packages make it easy for you to upgrade any type of garage door from normal galvanized hardware to tough, rust-resistant stainless steel and other specialized components.

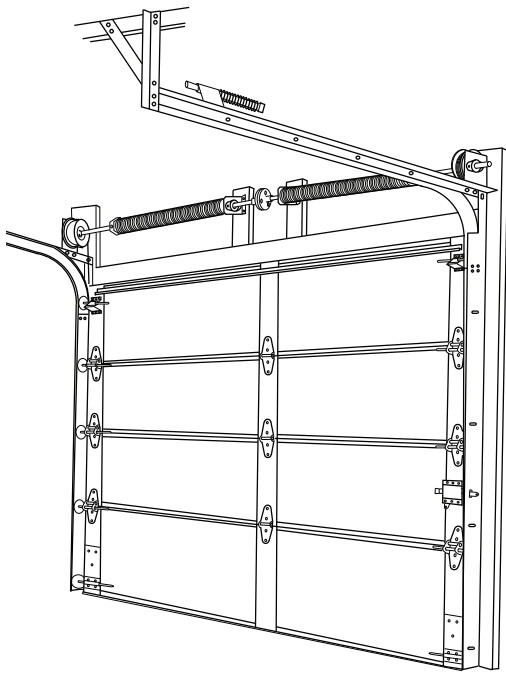
Ideal for any custom or name brand garage door that will be installed and operating in wet, corrosive or contaminated areas and is not offered with a stainless steel or harsh environment hardware option.



A Perfect Fit For Your Specific Door

We have perfected our specialty hardware designs over time to fit just about every door make, model and manufacturer. This allows us to create hardware packages that are customized to any specific garage door allowing them to look, operate and fit the way they should.

“Equip Your Door” hardware packages use your specific door and design criteria to create the package that’s best for you. With your door information, we recommend and list the items you need. This ensures that your door will operate safely and reliably while enjoying the qualities that only stainless steel and other premium rust-resistant materials offer.



Hardware Packages Include:

- Track
- Torsion Springs
- Torsion Shafts
- Couplers
- Keys
- Bearing Plates/Bearings
- Hinges/Face Hardware
- Rollers
- Cables
- Drums
- Struts- Optional
- Fasteners

We provide all or part of the hardware needed for your specific door and you supply the sections plus any specific parts you would like to provide.



Fill out our survey at:
stainlessgaragedoorparts.com



Combination



Fiberglass/Non-Insulated



Polycarbonate



Insulated

DOOR HARDWARE

Counterbalance Hardware



End Bearing Plate



Center Bearing Plate



Universal Center- LH

Bearing Plate Assemblies

Choose from a complete line of assembled bearing plate assemblies to make your next project a success.

Assemblies include either a stainless steel or galvanized bearing plate with a greaseable bearing installed.

Bearing insert material options include stainless steel with a stainless steel housings or standard chromate insert with a painted cast-iron housing.

Stainless Steel Bearing Plate Assemblies- 304L Series

Center Bearing Plate Assemblies- 11 ga. Stainless Steel with PBSS-SS Bearing

Part #	Description
PBSS-BCS338	3-3/8" Stainless Steel Center Plate w/Brg.
PBSS-BCS438	4-3/8" Stainless Steel Center Plate w/Brg.
PBSS-BCS438-6	4-3/8" Stainless Steel Center Plate w/Brg., for 6" Spgs
PBSS-BCS500	5" Stainless Steel Center Plate w/Brg.
PBSS-BCS500-6	5" Stainless Steel Center Plate w/Brg., for 6" Spgs
PBSS-BCS600	6" Stainless Steel Center Plate w/Brg.
PBSS-BCS600-6	6" Stainless Steel Center Plate w/Brg., for 6" Spgs
PBSS-BCUSS-R	Stainless Steel Universal Center w/Brg., RH
PBSS-BCUSS-L	Stainless Steel Universal Center w/Brg., LH

End Bearing Plate Assemblies- 11 ga. Stainless Steel with PBSS-SS Bearing

Part #	Description
PBSS-BFS345	3-3/8" to 4-3/8" Adj. S.S End Plate w/Brg.
PBSS-BFS345-T	3-3/8" to 4-3/8" Adj. S.S End Plate w/Brg.- for 800 drums
PBSS-BFS56	5" to 6" Adj. S.S End Plate w/Brg.

Stainless Steel Headplate Assemblies- 304L Series

Stainless Steel.

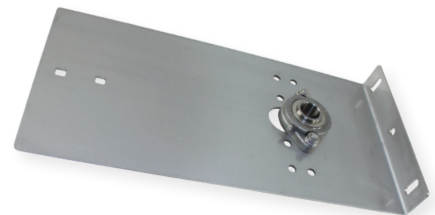
**Tough,
Rust-Resistant!
Perfect for any
Wet or Corrosive
Environment!**



Made In U.S.A.



Highlift Headplate w/Bearing



Vertical Lift Headplate w/Bearing

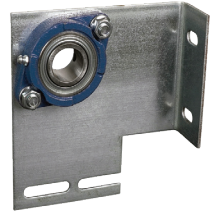
Highlift Headplates Assemblies- 11 ga. Stainless Steel with PBSS-SS Bearing

Part #	Description
PBSS-HLHS345-3	Headplate Highlift, SS, 2" or 3" Track, 3-3/8", 4-3/8" or 5" w/Brg.
PBSS-HLHS6-3W	Headplate Set, SS, Highlift, Wide 2"-3" Track w/Brg. Extra wide, 6" Offset
PBSS-VLHPSB	Headplate Vertical Lift, SS, 2" or 3" Track w/Brg.

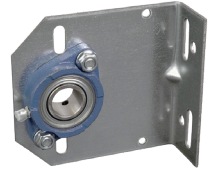
DOOR HARDWARE

Galvanized Steel Bearing Plate Assemblies

Center Bearing Plate Assemblies- 11 ga. with PBSLB Painted Greaseable Bearing	
Part #	Description
PBSLB-BC338	3-3/8" Galvanized Steel Center Plate w/Brg.
PBSLB-BC438	4-3/8" Galvanized Steel Center Plate w/Brg.
PBSLB-BC438-6	6" Galvanized Steel Center Plate w/Brg., Wide, For 6" Spgs.
PBSLB-BC500	5" Galvanized Steel Center Plate w/Brg.
PBSLB-BC500-6	6" Galvanized Steel Center Plate w/Brg., Wide, For 6" Spgs
PBSLB-BC600	6" Galvanized Steel Center Plate w/Brg. For 6" Spgs
PBSLB-BC600-6	6" Galvanized Steel Center Plate w/Brg.- for 6" Springs
PBSLB-BCU-R	Universal Galvanized Steel Center Plate w/Brg., RH
PBSLB-BCU-L	Universal Galvanized Steel Center Plate w/Brg., LH



Galvanized End Bearing Plate



Galvanized End Bearing Plate



Galvanized Universal Center

End Bearing Plate Assemblies- 11 ga. with PBSLB Painted Greaseable Bearing	
Part #	Description
PBSLB-BF338S	3-3/8" Galvanized Steel End Plate w/Brg.
PBSLB-BF438S	4-3/8" Galvanized Steel End Plate w/Brg.
PBSLB-BF500S	5" Galvanized Steel End Plate w/Brg.
PBSLB-BF600S	6" Galvanized Steel End Plate w/Brg.

Highlift Headplates Assemblies- 11 ga. with PBSLB Painted Greaseable Bearing	
Part #	Description
PBSLB-HLH345-3	Headplate Highlift, Galvanized, 3" Track, 3-3/38", 4-3/8" or 5" w/Brg.
PBSLB-HLH6-3W	Headplate Highlift, Galvanized, 2"/3" Track, 6" w/Brg., Extra wide, 6" Offset
PBSLB-VLHPG	Headplate Vertical Lift, Galvanized, 2" or 3" Track w/Brg.

Spreader Bars- Shaft Support Brackets	
Part #	Description
PBSS-BS100S	Shaft Support Bracket, Stainless Steel, With Stainless Steel Greaseable bearings(Spreader Bar) 16" to 22"
PBSLB-BS100S	Shaft Support Bracket, Stainless Steel, With Greaseable painted bearings (Spreader Bar) 16" to 22"



Spreader Bar

Track/Bearing Plate Connection Fasteners



Stainless Steel	
Part #	Description
CBLTS381	Carriage Bolt, 3/8" x 1", SS
NUTFS38	Flange Nut, 3/8", SS
HBLTS381	Hexhead Bolt, 3/8" x 1", SS
HBLTS3815	Hexhead Bolt, 3/8" x 1-1/2", SS
HBLTS3825	Hexhead Bolt, 3/8" x 2-1/2", SS
WASHS38	Washer, 3/8", SS

Galvanized	
Part #	Description
CBLTZ381	Carriage Bolt, 3/8" x 1", Galvanized
NUTFZ38	Flange Nut, 3/8", Galvanized
HBLTZ381	Hexhead Bolt, 3/8" x 1", Galvanized
HBLTZ3815	Hexhead Bolt, 3/8" x 1-1/2", Galvanized
HBLTZ3825	Hexhead Bolt, 3/8" x 2-1/2", Galvanized
WASHZ38	Washer 3/8", Galvanized

DOOR HARDWARE



PBSS-SS



PBSLB



PBSS-SS-125



PBSLB-114

Bearings

We offer a number of counterbalance bearing designs. Use our sealed and re-greaseable units for high-use or corrosive areas. These are available in standard or stainless steel construction. Other choices include flange or bushing style units for doors used less often or that are located in milder conditions.



B100



B100-N

Greaseable Bearings

Part #	Description
PBSS-SS	1" Stainless Steel Greaseable Bearing Incl. Stainless Steel Housing
PBSS-SS-125	1-1/4" Stainless Steel Greaseable Bearing Inc. Stainless Steel Housing
PBSLB	1" Greaseable Bearing- Painted Housing Incl. Painted Cast Iron Housing
PBSLB-114	1-1/4" Greaseable Bearing- Painted Housing Incl. Painted Cast Iron Housing

Standard Commercial Bearings

Part #	Description
B100	1" Standard Flange Radial Style Steel Bearing
B125	1-1/4" Standard Flange Radial Style Steel Bearing
B100-N	1" Standard Flange Nylon Bushing

Torsion Shafts

Torsion shafts are available in tough, rust-free 303 stainless steel or in corrosion resistant galvanized steel. Solid shafts are keyed with a 1/4" keyway the full length of the shaft. Hollow shafts are also available in stainless steel as well



SH10020



Solid Keyed Shaft

Stainless Steel Shafts

Part #	Description
SH100S20	1" Stainless, Hollow, 20', .083- Please specify cut length
SSK100S-XX (05-116)	1" Stainless, Keyed, Cut lengths 5'0" through 11'6"
SSK100S-12	1" Stainless, Keyed, 12'
SSK100S-15	1" Stainless, Keyed, 15'
SSK125S-12	1-1/4" Stainless, Keyed, 12'

Galvanized Steel Shafts

Part #	Description
SSK100G-XXX (050-146)	Shaft, Keyed, 1", Galvanized, Cut lengths 5'0" through 14'6"
SSK100G-15	Shaft, Keyed, 1", Galvanized, 15'1" (181 in.)

Is Stainless Steel Rust-proof?

No metal alloy is safe from rust, but stainless steel is your very best option for fending off corrosion and rust in a high-moisture environment. Time-after-time, stainless steel proves itself as the clear choice for keeping your hardware as rust-free and durable as possible.



DOOR HARDWARE

Couplers

Part #	Description
CP100	1" Coupler
CP100C	1" Specialty Coated Coupler
CP125	1-1/4" Coupler
CP125C	1-1/4" Specialty Coated Coupler



Coupler

1/4" Keystock	
Part #	Description
SSK-3	3" x 1/4" Stainless Steel Keystock
ZCK-3	3" x 1/4" Galvanized Keystock



1/4" Keystock

Roller Chain

Nickel Plated Roller Chain	
Part #	Description
CN41	#41 Nickel Plated Roller Chain
CN50	#50 Nickel Plated Roller Chain
CMLN41	#41 Nickel Plated Roller Chain Master Link
CMLN50	#50 Nickel Plated Roller Chain Master Link

Stainless Steel Roller Chain	
Part #	Description
CSS41	#41 Stainless Steel Chain
CSS50	#50 Stainless Steel Chain
CMLSS41	#41 Stainless Steel Link
CMLSS50	#50 Stainless Steel Link



Stainless Roller Chain

Cable Drums

High quality die-cast aluminum cable pickup drums are available with specialty coating for extra corrosion resistance or in original finish for standard applications.

Standard Lift- Specialty Coated		
Part #	Description	Max. Door Height
400-8SC	Residential, 1" Keyed	12'3"
400-12SC	Light Commercial, 1" Keyed	12'3"
5250-18SC	Commercial, 1" Keyed	18'2"
800-32SC	Heavy Commercial, 1" Keyed	32'1"
800-32SC-125	Heavy Commercial, 1" Keyed	32'1"



Coated Standard Lift

Standard Lift- Standard Die Cast Aluminum		
Part #	Description	Max. Door Height
400-8S	Residential, 1" Keyed	8'3"
400-12S	Light Commercial, 1" Keyed	12'3"
5250-18S	Commercial, 1" Keyed	18'2"
800-32S	Heavy Commercial, 1" Keyed	32'0"
800-32S-125	Heavy Commercial, 1" Keyed	32'0"



Die-Cast Standard Lift

DOOR HARDWARE

Cable Drums



Die Cast Highlift Drum



Coated Vertical Lift Drum



Die Cast Vertical Lift Drum



1/4" Keystick

Highlift- Standard Die Cast Aluminum

Part #	Description	Max. Door Height
400-54S	Light Commercial, 1" Keyed	11'1" (54" Highlift)
5250-54S	Commercial, 1" Keyed	12'0" (54" Highlift)
5750-120S	Commercial, 1" Keyed	15'0" (120" Highlift)
6375-164S	Heavy Commercial, 1" Keyed	19'0" (164" Highlift)
6375-164S-125	Heavy Commercial, 1-1/4" Keyed	19'0" (164" Highlift)

Vertical Lift- Specialty Coated

Part #	Description	Max. Door Height
850-11SC	Commercial, Keyed	11'1"
1100-18SC	Commercial, Keyed	18'1"
1350-28SC	Heavy Commercial, Keyed,	28'1"

Vertical Lift- Standard Die Cast Aluminum

Part #	Description	Max. Door Height
850-11S	Commercial, 1" Keyed	11'1"
1100-18S	Commercial, 1" Keyed	18'1"
1350-28S	Heavy Commercial, 1" Keyed	28'1"

1/4" Keystick

Part #	Description
SSK-3	3" x 1/4" Stainless Steel Keystick
ZCK-3	3" x 1/4" Galvanized Keystick

Specialty Coated Products

Better performance. Reduced maintenance. Choosing specialty coated parts for tough, wet and/or corrosive areas is a smart choice. Enhance the life of your door system with our coated drums, couplers and winding cones.

The special coating enables your counterbalance system of your door to look better and last longer in any wet, corrosive or high visibility area. Use in showroom areas, car, truck and bus washes, industrial plants, agricultural facilities, food processing, fertilizer plants and other areas that require extra protection.



Features

- Excellent Corrosion Resistance- chemicals, Moisture, more...
- Bimetallic Corrosion Protection
- 3,000 hr. Salt Spray Performance (min. per ASTM-B117)
- Thin Film Coating Maintains Product Dimensions
- Abrasion Resistant
- No Hydrogen Embrittlement
- FDA Approval
- High/Low Temperature Range
- Chrome Free



Made In U.S.A.

DOOR HARDWARE

Corrosion Resistant Torsion Springs

Need Protection From Rust And Corrosion?

Choose our hot-dipped galvanized wire for standard corrosion protection, or upgrade to our totally rust-resistant 302 series stainless steel wire.

These high-quality torsion springs help maintain a cleaner appearance and reduce the “drip down” look that comes from repeated exposure to moisture. Corrosion resistant wire lasts longer in wet or corrosive environments.

Stainless Steel Torsion Springs

Rust-resistant 302 series stainless steel wire

One of the most fundamental parts of your door system, torsion springs need serious protection from rust and corrosion.

That protection is available in the form of 302 stainless steel—ideal for the most extreme environments.



Part #	Description
SPS	Stainless Steel Torsion Springs

Galvanized Torsion Springs

Corrosion-resistant galvanized wire

Our galvanized torsion springs are constructed with high quality hot-dipped, zinc galvanized wire and are an excellent choice for areas with high moisture areas.

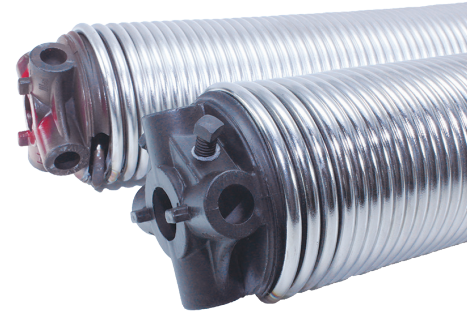
Part #	Description
SPG	Galvanized Torsion Springs

Winding Cones & Spring Assembly



Part #	Description
C200(L or R)	2" I.D Winding Cone (L or R) Hand Wind
C258(L or R)	2-5/8" I.D Winding Cone (L or R) Hand Wind
C334(L or R)	3-3/4" Winding Cone (L or R) Hand Wind
C600 (L or R)	6" Winding Cone (L or R) Hand Wind
C600114 (L or R)	6" Winding Cone (L or R) Hand Wind- 1-1/4" Shaft
C334(L or R)C	3-3/4" Winding Cone (L or R) Wind, Specialty Coated
C600(L or R)C	6" Winding Cone (L or R) Hand Wind, Specialty Coated
C600C(L or R)114	6" Winding Cone (L or R) Hand Wind- 1-1/4" Shaft

Measure Twice- All springs are Non-Returnable



Standard Spring Wire Chart

Common Diameters	Common Wire Sizes		
1-3/4"	.207	.262	*.319
2"	.218	*.273	.331
2-5/8"	.225	.283	.343
3-3/4"	.234	.295	.362
5-1/4"	.243	.306	.375
6"	.250	.312	** .406

* Available in galvanized steel wire only.

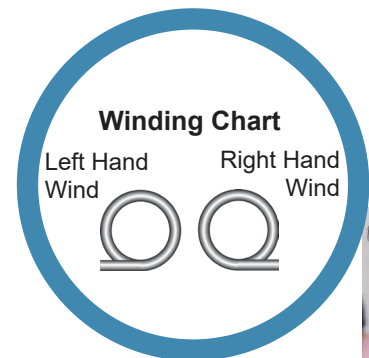
** Available in Stainless Steel wire only.



Made In U.S.A.

Warning:

Torsion springs are under extreme pressure and should only be handled by experienced personnel who have been trained in the proper procedures, tools and safety measures. Improper use could result in serious injury or death.



Duplex and Triplex springs are also available. Please call for availability of other wire sizes.



DOOR HARDWARE

Cable & Cable Assemblies



Garage Door Cable	
Part #	Description
CBS18	1/8", 7 X 19 Stainless Steel Cable
CBS532	5/32", 7 x 19 Stainless Steel Cable
CBS316	3/16", 7 X 19 Stainless Steel Cable
CBS18NR	1/8", 19 x 7 Stainless Steel Cable Non-Rotating



Assembled Cable Assemblies
(with Thimbles and Sleeves)
Call for Pricing

Cable Fitting	
Part #	Description
CO18	1/8" Oval Aluminum Press Sleeve
CR18	1/8" Round Aluminum Press Sleeve
COC18	1/8" Oval Copper Press Sleeve
CRC18	1/8" Round Copper Press Sleeve
CO532	5/32" Oval Aluminum Press Sleeve
COC532	5/32" Oval Copper Press Sleeve
CR532	5/32" Round Aluminum Press Sleeve
CRC532	5/32" Round Copper Press Sleeve
COC316	3/16" Oval Copper Press Sleeve
CRC316	3/16" Round Copper Press Sleeve
CO316	3/16" Oval Aluminum Press Sleeve
CR316	3/16" Round Aluminum Press Sleeve
CHG18	1/8" Galvanized Cable Thimble
CHG532	5/32" Galvanized Cable Thimble
CHG316	3/16" Galvanized Cable Thimble
CHS18	1/8" Stainless Steel Cable Thimble
CHS532	5/32" Stainless Steel Cable Thimble
CHS316	3/16" Stainless Steel Cable Thimble



Cable Fittings



Made In U.S.A.

Copper fittings are recommended for all stainless steel assemblies



Strap Counterweight

Counterweight System Hardware and Kits

Drums/Spools	
Part #	Description
SWSP	Strap Spool
HC0700 (L or R)	700/750 Right Hand Cable Weight Drum
HC0808 (L or R)	Cable Counter Weight Drum, 8", 808, 500# max
HC01008 (L or R)	Cable Counter Weight Drum, 10", 1008, 500# max
HC01210 (L or R)	Cable Counter Weight Drum, 12", 1210, 500# max
HC01410 (L or R)	Cable Counter Weight Drum, 14", 1410, 600# max

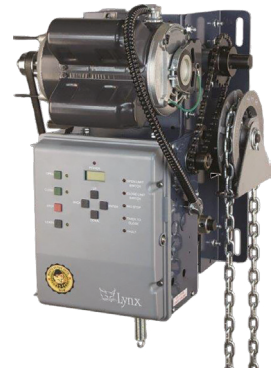
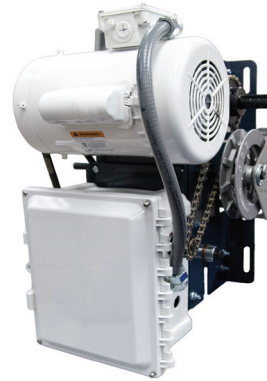


Cable Counterweight

Drums/Spools	
Part #	Description
SWS08	Counterweight Strap, 8' Door- 95"
SWS09	Counterweight Strap, 9' Door- 106"
SWS10	Counterweight Strap, 10' Door- 117"
SWS12	Counterweight Strap, 12' Door- 128"

**Other strap and counterweight systems available.
Please call for pricing and availability**

SPECIALTY GARAGE DOOR OPENERS & CONTROLS



**AIR-POWERED
ELECTRIC DC
ELECTRIC WASH BAY
CONTROL STATIONS
REPAIR PARTS
ACCESSORIES**



Made In U.S.A.

Specialized and standard operators and controls

GARAGE DOOR OPENERS & CONTROLS



Air-Powered Overhead Door Operators



Supralift II

A perfect match for any wet, corrosive and/or high-use application.

Complete Corrosion Resistance

All aluminum cylinder, piston and end cap design, coupled with the most corrosion resistant materials available, provides maximum life in the world's toughest applications.

Reliable Performance

Engineered for continual use in harsh environments. Supralift II™ provides your door with dependable, trouble-free operation cycle-after-cycle.

Fast

Supralift™ cycles door 3 times faster than electric openers decreasing cycle time and energy costs. Opener accelerates and decelerates at the beginning and end of each cycle providing smooth operation of your door.

Long Life

Supralift™ operators are designed and rated for millions of cycles ensuring years of reliable operation in high use areas.

Low Maintenance

Enhanced design minimizes routine maintenance and periodic service, resulting in lower annual repair and service costs for you.

Safe

Supralift™ offers instant reverse at the control box and can be stopped by hand. Safety options include photoeyes, loop detector and bottom edges for safety reverse.

50%
MORE POWER
Than other
Air-Powered Openers



Made In U.S.A.

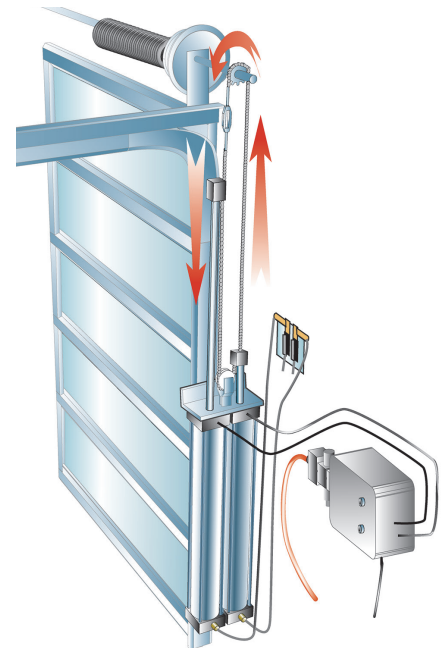
Quality Design... Outstanding Performance

- **Lubrication Free Piston Cylinders**
- **Stainless Steel Mounting Brackets**
- **Quick Connect Push Fittings**
- **Posi-Lock Chain Collar**
- **Aluminum Turnbuckle**
- **Stainless Steel Sprocket**
- **Flow Control Kit**

GARAGE DOOR OPENERS & CONTROLS

How Supralift II™ Works

Supralift™ Air-Powered operators utilize a dual cylinder/piston assembly mounted to the door track. The air valve and regulator located between your compressor and operator directs air to either the open or the close cylinder which pushes the piston/rod assembly down. The drive chain is attached to the top of each piston rod and loops over the sprocket on the door's torsion shaft. On the "open" signal, compressed air drives the "open" piston/rod downward. The chain rotates the sprocket, rotating the torsion shaft. The door responds with a smooth, fast motion to the open position. On the "down" signal the door closes with a cushiony stop, preventing cable spooling and unwanted door jerking.



Designed for maximum performance in wet, use environments, the Supralift II™ uses existing air supply (40-90 psi) for fast, reliable operation of your door system.

Supralift II Air-Powered Operators

Part #	Description
SL2-08	8' High Door Operator
SL2-10	10' High Door Operator
SL2-12	12' High Door Operator
SL2-14	14' High Door Operator
SLDO	Dual Operators (For Large or Heavy Doors)

All operators are listed for the height of the door they are designed to open and include: nickel plated chain, chain turnbuckle, shaft sprocket and stainless steel mounting hardware.

The unit is ready for installation to your door system. 3/8" polyflow airline is not included. (See installation kits under options) You must order your controls and buttons separately from the air-operators control boxes section.

Supralift II Chain Upgrades

Upgrade replaces standard supplied nickel plated roller chain with stainless steel roller chain.

Part #	Description
SLSS08	Stainless Chain Upgrade, 8' High
SLSS10	Stainless Chain Upgrade, 10' High
SLSS12	Stainless Chain Upgrade, 12' High
SLSS14	Stainless Chain Upgrade, 14' High



Rust-Resistant Chain

Our nickel (standard) and stainless steel (optional) chain are both great choices for areas such as carwashes and/or other high moisture and corrosive areas.



Flow Control Kits- **Now Standard!**

Eliminates cable spooling common when a door reverses direction when in motion. Provides smoother operation and easier adjustment. Install away from the cold doorway & undercarriage spray. Minimizes moisture intake problems and freeze-ups.

GARAGE DOOR OPENERS & CONTROLS



Air-Powered Overhead Door Operators



Made In U.S.A.



- Direct Drive
- Fast, Safe Operation
- Magnetically Coupled
- Field Serviceable
- Smooth Reliable Operation
- Horizontal or Vertical Mount
- Low Maintenance
- Extended Life
- Easy To Install



Horizontal mount shown
Vertical mount also available

Designed Specifically for Wet, Dirty, Corrosive and/or High Use Environments...

Designed with your toughest environment in mind, NuMax™ Air-Powered Door Operators are ideal for any applications where dependability, reliability and durability are absolutely critical for a profitable and trouble-free operation.

Operating as much as 3 times faster than the speed of common garage door operators, NuMax™ Operators utilize an innovative compressed air and rare-earth magnetic design. These high quality operators feature a heavy duty, rust-resistant, tubular cylinder with no mechanical connection between the piston and the piston slide. This advanced magnetically-coupled design eliminates the need for external seals and fewer wear components, providing less maintenance and leak-proof operation.

For cold weather climates, NuMax™ “exhaust only” configuration ensures less probability of moisture intake and freeze-ups giving you the confidence of reliability in any season or any climate.

NuMax™ Operators conveniently connect directly to your door virtually eliminating costly down-time due to cable jumping common with jackshaft style openers.

Versatile enough to meet your particular door system’s needs, NuMax™ can be installed horizontally or vertically to fit any standard or custom application.

Completely
FIELD SERVICEABLE



Field serviceable design ensures easy, hassle-free replacement of seals and other repair components in the field without sending the unit in to the factory for repair or service.

Applications

*Car/Truck Washes - Fast Lube Stations
Auto Dealerships - Food Processing
Many Others*



Stainless Steel Cushion Spring Limit Assembly

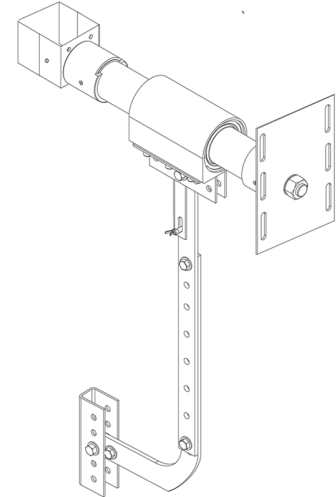
Included for soft cushioning.
Allows you to set your doors open limit
ANYWHERE!

GARAGE DOOR OPENERS & CONTROLS

Horizontal Mount NuMax

- Connects Directly to Top Section
- Stainless Steel Arm Assembly
- Best Used with Standard Lift or Highlift Models
(Highlift over 6" will require a dummy section- See door options)

Part #	Description
NMH08	8' NuMax Horizontal Mount
NMH10	10' NuMax Horizontal Mount
NMH12	12' NuMax Horizontal Mount
NMH14	14' NuMax Horizontal Mount
NMH16	16' NuMax Horizontal Mount



Vertical Mount NuMax

- Connects Directly to Bottom Section
- Stainless Steel Multi-Motion Door Connection
- For Doors with over 36" of Highlift Track

Part #	Description
NMV08	8' NuMax Vertical Mount
NMV10	10' NuMax Vertical Mount
NMV12	12' NuMax Vertical Mount
NMV14	14' NuMax Vertical Mount
NMV16	16' NuMax Vertical Mount

Note: All operators are listed for the height of the door. The unit is ready for installation to your door system. 3/8" polyflow airline is not included. You must order your controls and push buttons separately from the Control Boxes Section. Doors with drawbar operators require and center stile and strut for top section.

All The Features You Need...

- True 2" Diameter Bore Size- 2-1/4" O.D
- 1/8" Cylinder Wall Thickness
- Aluminum Cylinder Wall Anodized to 68 RC
- Adjustable 3" Internal Cushions
- Aluminum Trolley Slide
- Exhaust Only Design- No Moisture Intake
- Stainless Steel Hardware
- Stainless Steel Arm Assembly
- Cushioning Spring Assembly
- Pre-Assembled Flow Control Kit
- 3/8" NPT Porting
- Quick Dump Exhaust
- Fully Field Repairable
- 36 Month Warranty

NuMax and Supralift II Openers are versatile enough to meet any of your controlling needs.

We offer a full range of control functions to meet your requirements.

Choose from Single Standard Control Boxes to Multi-Door and Multi-Function Boxes.



State-of-the-art; NEMA-4X Watertight Control box allows convenient operation with a variety of signalling options including: photoeyes, loops, timers, as well as other devices. High quality valve, filter, regulator, OSHA cut-off valve and double-sealed push buttons included. Emergency open button (shown) or thermostat optional.

Easily integrated with Car Wash and other equipment.



Supralift II™ is controlled easily with push buttons, radio controls, remote buttons, photoeyes, loops, contact switches, relays, proximity switches and many other devices.

Use our Multi-Door Control Boxes to save time and space. Multi-Door Control Boxes allow for a large variety of accessories and functions. Consult the factory for the one that best suits your needs. Available with 4, 6, and 8 door capability.



All control boxes provide ample room for easy wiring and the addition of more accessories. Double terminal strip allow for easy termination of your control devices, accessories and equipment. Easy plug-in primary power source eliminates hard wiring.

GARAGE DOOR OPENERS & CONTROLS

Air-Operator Control Boxes

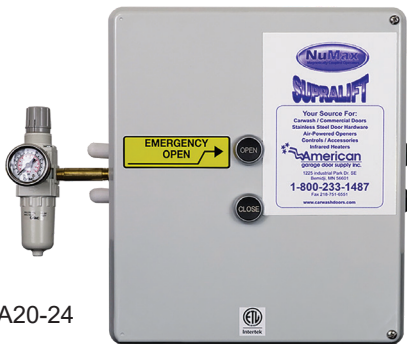
All air-powered openers require a control box with a valve and filter regulator. These control boxes are designed for use with Supralift II™ and Numax™ Air-Powered Operators. All include a filter regulator and fittings for a 3/8" polyflow line installation. Our control boxes allow for a variety of control accessories including push button stations, timers, photoeyes, loop detectors, proximity switches and other devices.

Plug in power source requires no hard-wiring. All push buttons are double-sealed and waterproof.

Easy to use double terminal strip makes wiring of accessories a breeze!



Made In U.S.A.



SLA20-24

Easily integrates with carwash equipment

Standard Emergency Air-Opener Control Box

Filter/Regulator/Shut-off

Filtering System

Features improved contaminant filter for maximum life and reduced maintenance of the entire system.

Regulator

Integrated adjustable regulator allows for easy adjustment of primary air flow into the system.

Shut-off Valve

Allows quick shut down at valve box, Relieves downstream air pressure for installation or service of the operator. Also used for manual operation of door system.

Valve

High Quality Valve

High quality valve provides long life and minimal maintenance. Valve requires no lubrication eliminating expensive oiler and exposure to oil attracted contaminants. Z-Type O-ring allows for even wear on all surfaces increasing service life and less maintenance.

- NEMA-4X Enclosure
- 2 Position Automatic Valve
- Lifetime Warranty on Coils
- Open, Close and Stop Push buttons
- 24 Volt Control Circuit
- Regulator with Gauge and Drain
- Manual Shut-Off Valve
- Emergency Open Push Button Valve for operation of opener upon power failure.

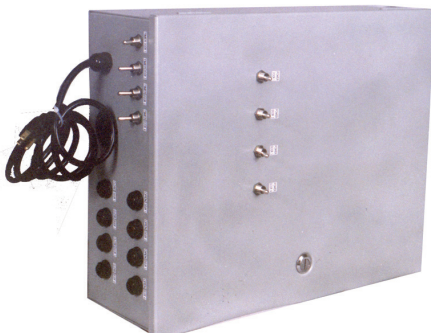
Part #	Description
SLA20-24	Emergency Open Waterproof Control Box 24V. Control Circuit, 115V Power Source (with 2 position up-down buttons mounted in box)

*Other Control Boxes Available with Thermostats, Timers, Counters, Relays
Please Call For Pricing & Availability.*

Multi-Valve/Control Boxes

For installations that have multiple installations of our Supralift™ or Numax™ Air-Powered Operators. Our multi-valve box can save you time and space. Order multi-valve boxes for 4, 6 or 8 openers.

Other sizes available upon request.



Multi-Door Box

All air-powered openers require a control box with a valve and filter regulator. These control boxes are designed for use with Supralift II™ and Numax™ Air-Powered Operators. All include a filter regulator and fittings for a 3/8" polyflow line installation.

GARAGE DOOR OPENERS & CONTROLS

Air-Powered Operator Options

Inline Dryers

Removes 99.9% condensation and moisture from airlines increasing cylinder and seal life. Highly recommended to help prevent freeze-ups.

Part #	Description
ILD10-14-N-A	Inline Dryer (1 Door) 1/4" NPT, 25 SCFM, Ass'd, Norgren. N90
ILD10-14-N	Inline Dryer (1 Door), 1/4-in NPT, 35 SCFM, Dryer Only, Norgren. N90
ILD20-38	Inline Dryer (2 Door) 3/8" NPT, 50 SCFM
ILD-BKT	Bracket, Inline Dryer



Inline Dryer

Timers/Thermostats

Part #	Description
UPG-MTIMER	Add to Controls Boxes for Built-in Timer. 11 pin socket factory installed.
TIMER-M	Timer, Adjustable, Macromatic with Base, 1.8 - 180 seconds- Field Install
TIMSS110	Timer, One Shot, .05-5, 24V., 120 V.
TIMSS24	Timer, One Shot, .05-5, 24V., 24 V.
SLTC24	Thermostat, Air-Opener, Digital, 24 V., RANETC-112000



Macromatic Timer



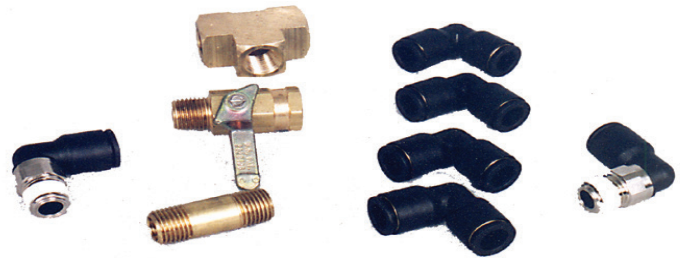
RANETC T-Stat

Airline

Part #	Description
POLY38-100	Polyflow Airline, 3/8", 100' Roll

Air-Powered Operator Fittings

Part #	Description
SLPFT-14X14	Fitting, "T", 1/4" x 1/4", Female
SLPFT-532X532	Fitting, "T", 5/32" x 5/32", Female
SLSF-14x14	Street Elbow, 1/4" Male x 1/4" Female
SLRF-1514	Nipple, 1-1/2" x 1/4" NPT
SLRF-2514	Nipple, 2-1/2" x 1/4" NPT
SLRF-1538	Nipple, 1-1/2" x 3/8" NPT
SLRF-2538	Nipple, 2-1/2" x 3/8" NPT
SLPF90-14X14	Push-in Fitting, 90 Degree, 1/4" x 1/4", NPT
SLPF90-38X14	Push-in Fitting, 90 Degree, 3/8" x 1/4", NPT
SLPF90-38X38	Push-in Fitting, 90 Degree, 3/8" x 3/8", NPT
SLPF90-4X532	Push-in Fitting, 90 Degree, 4mm x 5/32", NPT
SLPF-12X14	Push-in Fitting, 1/2" x 1/4", NPT
SLPF-18X18	Push-in Fitting, 1/8" x 1/8", NPT
SLPF-38X14	Push-in Fitting, 3/8" x 1/4", NPT

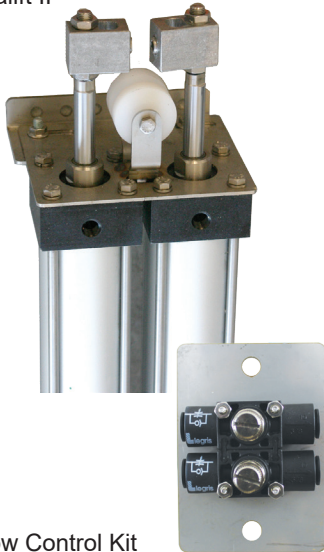


Part #	Description
SLPF-38X38	Push-in Fitting, 3/8" x 3/8", NPT
SLPF-4X532	Push-in Fitting, 4mm x 5/32", NPT
SLPF-532X18	Push-in Fitting, 5/32" x 1/8", NPT
SLPF-532X532	Push-in Fitting, 5/32" Union
SLPFU-38X38	Push-in Fitting, Union, 3/8" x 3/8"
SLPFU90-38X38	Push-in Fitting, 90 Degree, Union, 3/8" x 3/8"
SLVM	Valve, Manual 1/4" Female, 1/4" Male NPT

GARAGE DOOR OPENERS & CONTROLS

Supralift Repair Parts

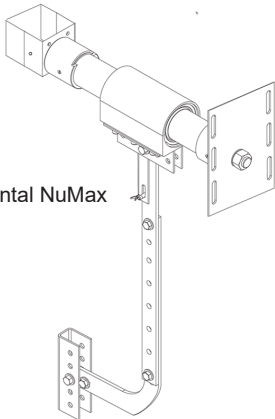
Supralift II



Flow Control Kit

Part #	Description
SLSK-NG	Seal Kit Only, Top Cap, for S.S Style Bushing, per cyl. (SWK-15)
SLSK-P	Seal Kit Only, Top Cap, for Bronze Style Bushing, Parker, per cyl
SLPS-NO	Seal, Piston Seal Kit, w/ Wear Sleeve- Norgren (per cyl)
SLPS-P	Seal, Piston Seal Kit, w/ Wear Sleeve-Parker (per cyl)
SLBUSH-N	Stainless Steel Bushing w/ Seals - Norgren
SLBUSH-P	Bronze Bushing w/ Seals - Parker
SLPA	Pulley, Idler for Supralift, Assembled
41B12SS	Sprocket, Stainless Steel , 12 Tooth, #41, 1" Bore (New Style)
SLACA	Collar, Aluminum, Supralift, Assembled w/ Set Screw and SS Nuts
SLJNUT	Nut, Jambnut, SS, Piston Rod, 7/16"-20, 11/16" AF
SLCKN-08	Chain Kit, 8' Supralift, Nickel Plated, #41, 9' w/M.L's
SLCKN-10	Chain Kit, 10' Supralift, Nickel Plated, #41, 11' w/M.L's
SLCKN-12	Chain Kit, 12' Supralift, Nickel Plated, #41, 13' w/M.L's
SLCKSS-08	Chain Kit, 8' Supralift, Stainless Steel, #41, 9' w/M.L's
SLCKSS-10	Chain Kit, 10' Supralift, Stainless Steel #41, 11' w/M.L's
SLCKSS-12	Chain Kit, 10' Supralift, Stainless Steel #41, 13' w/M.L's
SLTB2	Bracket, SS, Supralift, Top Plate w/Idler brackets
SLTBA	Turnbuckle Assembled w/studs
SLFLKIT-4	Flow Control Kit, Supralift, Plate & Controls Only, (New 11/2013)

Horizontal NuMax



NuMax Repair Parts

Part #	Description
QDEV-A	Quick Dump Exhaust Valve Assembly
NM1750-9080	Complete NuMax Repair Kit for Piston & Carrier, Seals and Bearings
SUPER-LUBE14	Super-Lube, Synthetic Grease, 14 oz. Cartridge
SUPER-LUBE-A11	Super-Lube, Synthetic Grease, Aerosol, 11 oz.
MAGNALUBE-1C	MagnaLube, Synthetic Grease, 1 pound Can
NM1200-1030	NuMax, Retaining Ring for End Cap (1)
NM1200-1125	NuMax, O-Ring Seal for End Cap
NM1750-1027	NuMax, SS Nut for End Cap, 3/4"-10
NM1750-1028	NuMax, Washer for End Cap, 3/4"
DAAS	Drawbar Arm Assembly, SS, Complete

Regulator & Dial/Valve



Noise Muffler

Control Box Replacement Parts

Part #	Description
SLV24-EP	Valve, E-Open, Parker (Watts), 24V.
SLV24-P	Valve, Parker (Watts), 24V.
FRC24-P	Coil, Solenoid, 24V., Replacement, Parker (New Style)
FRGL	Gauge, Filter/Regulator, Liquid Filled, 160 psi
FRGP	Gauge, Filter/Regulator, Standard, 160 psi
SLFR-72G-N	Regulator, Filter, Norgren, 80 SCFM, 0-160 psi. w/Liquid Filled Gauge
SLFR-72G-NO	Regulator, Filter- Norgren, 80 SCFM, 0-160 psi., No Gauge
VV500P-4	Valve, Shut Off, Assembly, Ball Valve
SLPE18	Noise Muffler, Porex, 1/8", NPT, (Control Box)
SLPE38	Noise Muffler, Porex, 3/8", NPT (NuMax Operator)
SLTR	Transformer, 115v-24v

GARAGE DOOR OPENERS & CONTROLS

Smart, Durable and Reliable Fully Adjustable to Your Specialty Application

A great choice for just about any high-use, wet, dirty or otherwise demanding application, the SmartJack Electric VFD Operator delivers the extra durability, reliability and adaptability that you need in those situations.

Using a combination of a state-of-the-art programmable logic control module (PLC), durable, high-quality motor and modern gearbox technologies, the SmartJack features just about everything you want in a specialty door operator.

Fully-adjustable to meet just about any set of operational requirements, SmartJack VFD electric operators control the door with soft-start, soft-stop motion, which is easy on the door. This adjustment allows for complete customization of the acceleration and deceleration speeds, starting and stopping points, as well as numerous other functions.

The SmartJack monitors the door position and speed allowing the system to know exactly where the door is in relation to where it was originally programmed. This monitoring is not only used in SmartJack's ability to be fine-tuned for travel and speed, it is also used for a built-in safety mechanism that helps in detecting obstructions, door damage or poor door operation.



System Features

- Soft-Start, Soft-Stop
- High Speed Door Operation
- Variable Speed Control
- Built-in Door Collision Detection
- Auto Close Timer & Midstop
- Durable, Reliable TEFC Motor
- Sealed Worm Gear Box- (Hazardous Location Rated)
- Meets UL 325 Requirements
- Easy Flexible Programming For Any Door Application.



An excellent choice for any demanding door project!

Designed for quick, easy setup, optimum safety and ease-of-use in mind, SmartJack's Programmable Logic Control (PLC) with HMI display offers flexible on-site programming allowing it to adjust to just about any set of operational conditions.

The SmartJack is pre-programmed and ready to operate; just input a few entries in the control panel during the initial setup and you are ready to go. Take a few moments more and you can customize the door speed and travel for your specific situation.

Numerous inputs are available for integrating signaling devices or equipment such as: control stations, radio controls, photoeyes, safety edges, motion detectors, loops, carwash equipment and many others.
Numerous outputs are standard as well for signalling other devices such as: lights, monitors, etc.



Electro-Mechanical Features

- 3/4 hp. NEMA-4 rated, continuous-duty, AC induction washdown motor.
- Stainless Steel Brake
- Pre-wired Sealed Motor Harness
- Sealed Worm Gear Box- (Hazardous Location Rated)
- NEMA-4X Control Box with 3 Buttons On Outside Of Panel, Open, Close & Stop with auto/manual selection switch.
- High Quality VFD Controller and Inverter
- 6'-#50 Waterproof Chain & Masterlink
- 18 tooth drive and 36 tooth coated # 50 sprockets
- Choice of Primary Power- 120/230VAC (1Ø) or 230/460 VAC (3Ø)
- Meets UL 325 Requirements

SmartJack Garage Door Operators

Part #	Description
SJ-75-11	SmartJACK Operator-VFD Drive 3/4 hp, w/ SS Brake, 120V. 1 ph.Control Box
SJ-75-21	SmartJACK Operator-VFD Drive, 3/4 hp, w/ SS Brake, 208-230V. 1 ph.Control Box
SJ-75-23	SmartJACK Operator-VFD Drive, 3/4 hp, w/ SS Brake, 208-230V. 3 ph.Control Box
SJ-75-43	SmartJACK Operator-VFD Drive, 3/4 hp, w/ SS Brake, 480V. 3 ph.Control Box

Accessories

Part #	Description
CPS-OPEN4	FRABA Optoeye Photoeye Set, Monitored. w/ Transmitter/Receiver, NEMA 4X, w/ Soft Mounting Brackets, UL325 Compliant
TELSET24DC	Photo Eye Set, Telco, 24V. w/ Adjustable Brackets, DC

GARAGE DOOR OPENERS & CONTROLS

Washbay & Standard Electric Jackshaft Operators



N-CDJ- Standard Model



N-CDJ- Washbay Model

Our electric jackshaft operators are a great fit on just about any standard, highlift or vertical lift sectional garage door.

For wet conditions choose our wash bay operator models which include extra features that work well in most high moisture situations.

The operator can be wall, hood, or shelf mounted on either side of the door. It also incorporates a floor level disconnect mechanism for manual operation.

When using standard duty operators in carwash bays, consider our attic or mechanical room kit as shown on page 17.

25 CYCLES/HOUR, 100 CYCLES/DAY

FEATURES

Standard Features

- 1/2 hp. or 3/4 hp.- 115V/230 V- 1 Phase or 3 ph.
208/230/460- 3 ph. 1650- 1725 RPM, High Starting Torque Motor.
- Inherent Mechanical Brake.
- Logic Board Standard Featuring B2 Mode, C2 Mode, T Mode
- On Board, Open, Close and Stop for Ease of Setting Limits.
- Photeyes included.
- Pre-wired to Accept Sensing Devices
- 24V Accessories Power
- On-board (372 MHz) Receiver Capable of Programming up to 20 Transmitters.
- Electrical Enclosure- NEMA 1
- Max. Output Revolutions- 45
- Primary Drive: Heavy Duty 4L V-Belt.
- Output: #50 Chain with Sprockets
- 32 RPM Output Shaft Speed
- Warranty- 2 Years on Parts & Motor.

Wash Bay Operator Additional Features

- TEFC motor (totally enclosed fan-cooled)
- Seal-tight Conduit & Connectors
- NEMA-4X Open, Close and Stop Pushbutton Station
- NEMA-4X Control Box
- NEMA-4X Photoeyes

How to Create the Correct Part Number

1. (-XX) Choose Your Voltage Designation.
11= 120VAC 1Ø
21= 208-230VAC 1Ø
23= 208-230VAC 3Ø- Add \$ 78.00 to List Price

Additional & Protective Features

- Adjustable friction clutch
- Full overload protection
- Floor level disconnect mechanism for manual push-up operation

Standard Duty Electric Operators

Part #	Type	Hp.	Rating
N-J-50-XX-L	Jackshaft	1/2	NEMA-1
N-J-50-XX-L	Hoist	1/2	NEMA-1
N-J-75-XX-L	Jackshaft	3/4	NEMA-1
N-J-75-XX-L	Hoist	3/4	NEMA-1

Wash Bay Electric Operators

Part #	Type	Hp.	Rating
N-CJ-50-XX-L	Jackshaft	1/2	NEMA-4
N-CJH-50-XX-L	Hoist	1/2	NEMA-4
N-CJ-75-XX-L	Jackshaft	3/4	NEMA-4
N-CJH-75-XX-L	Hoist	3/4	NEMA-4

When ordering, please specify right or left hand mounting and door height.

GARAGE DOOR OPENERS & CONTROLS

Operator Controls/Accessories Control Stations



3BXT



PBS3



PBK2



1KX

American Garage Door Supply offers a wide variety of controls to help you with your next new, retrofit or repair project.

Choose our double-sealed and waterproof, NEMA-4X push buttons and enclosures for those wet and corrosive environments or select a standard NEMA-1 control for those dryer areas such as shops, mechanical rooms and offices.

NEMA-4X Waterproof Controls

Part #	Description
PBK1	One Button Control, NEMA-4X
PBK2	Two Button Control, NEMA-4X
PBK3	Three Button Control, NEMA-4X
1BXT	One Button Control, NEMA-4X
2BXT	Two Button Control, NEMA-4X
3BXT	Three Button Control, NEMA-4X

NEMA-1 Standard Duty Controls

Part #	Description
PBS1	One Button Control, NEMA-1
PBS2	Two Button Control, NEMA-1
PBS3	Three Button Control, NEMA-1

NEMA-4 Keyswitch

Part #	Description
1KX	Key Switch (Ext. Surface Mt), NEMA-4

Safety Photoeye Sensors



FRABA Photoeyes

Choose from two extremely reliable submersible photoeye systems to detect vehicles, people and other obstructions in the doors pathway.

Designed for high moisture and dirty areas, these photoeyes have a great track record of being highly durable and reliable in direct spray, fog, dirt and other nasty elements.



Telco Photoeyes

FRABA Photoeyes

Part #	Description
CPS-OPEN4	FRABA Optoeye Photoeye Set, Monitored. w/ Transmitter/Receiver, NEMA 4X, w/ Soft Mounting Brackets

Telco Photoeyes

Part #	Description
TELSET24	Telco Photo Eye Set - 24VAC (w/PA10BKT Adjustable Brackets)
TELSET-24DC	Telco Photo Eye Set - 24VDC (w/PA10BKT Adjustable Brackets)
TELSET115	Telco Photo Eye Set - 115V (w/PA10BKT Adjustable Brackets)
TEL24A	Telco Photo Eye Amplifier, 24V. (PA11B302T)
TEL24R	Telco Photo Eye Receiver (LR110LTB3815)
TEL24T	Telco Photo Eye Emitter (LT100HLTB3815)
PA10BKT	Adjustable Photoeye Bracket Set, Stainless Steel (for Telco Eyes)



We also have Banner Photoeye Sets.

Please call for availability

GARAGE DOOR OPENERS & CONTROLS

Loop Detectors/Preformed Loops

Providing positive vehicle detection, our loops are guaranteed to cost less and deliver more than any other loop system in the market. Forget the hassle of making the loops yourself.

Requires no guesswork when it comes to wiring our preformed loops into your detector.



Loop Detector & Pre-formed Loop

Part #	Description
NP2-24VAC-DC	Northstar Detector, 24V. AC/DC w/ Harness
NP2-120VAC	Northstar Detector, 120V. AC w/ Harness
XNL1018/50	Preformed Loop, Sawcut, 18 ga. XLP, 4-ft x 6-ft, 50-ft Lead
XNL1218/50	Preformed Loop, Sawcut, 18 ga. XLP, 4-ft x 8-ft, 50-ft Lead
XNL1418/50	Preformed Loop, Sawcut, 18 ga. XLP, 4-ft x 10-ft, 50-ft Lead
ENL1018/50	Preformed Loop, Pave-Over, 18 ga., 4-ft x 6-ft, 50-ft Lead
ENL1218/50	Preformed Loop, Pave-Over, 18 ga, 4-ft x 8-ft, 50-ft Lead

Motion Detectors



Falcon Motion Detector

Part #	Description
10FALCON	High Mounting Motion Detector (11'5" to 24' Mounting Height- Remote Controlled)
10FALCONXL	Low Mounting Motion Detector (6'5" to 11'5" Mounting Height- Remote Controlled)
10REMOTE	Remote Control for Falcon Motion Detector

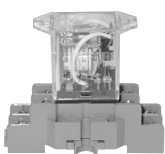
Pneumatic Edges/Accessories



Pneumatic Reversing Edges

Part #	Description
PRKIT3	Pneumatic Edge Kit, 3 Wire, 14-ft
AHG-50	Gummed Rubber Hose, 7/16" x 5/8"
AHP-10	Air Hose Plug
AHT-375	Air Treadle Hose

Timers/Relays



Ice Cube Relay



One Shot Timer

Part #	Description
24-24-1	Relay, Ice Cube Style, DPDT, Volt AC
24-115-1	Relay, Ice Cube Style, DPDT, 110 Volt AC
SH2B-05	Relay Base
TIMER-M	Macromatic Timer w/ Base, Adjustable, w/Base, 1.8 - 180 seconds
26-438	Timer - Dual Function, 24 Volt AC.
26-200	Timer - Adjustable Artisan
TIMSS24	Timer, One Shot, .05-5, 24 Volt AC/DC
TIMSS115	Timer, One Shot, .05-5, 120 Volt AC

Magnetic Contact Switch



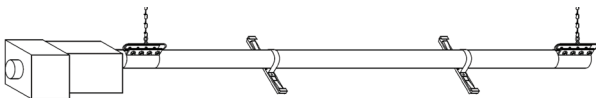
Magnetic Contact Switch

Part #	Description
MCS	Magnetic Contact Switch

INFRARED RADIANT HEATERS



**SINGLE STAGE
2-STAGE
STAINLESS STEEL STRAIGHT TUBE
STAINLESS STEEL U-TUBE
HEATER ACCESSORIES**



Made In U.S.A.

For harsh, high-moisture environments

INFRARED RADIANT HEATERS

Solaronics

STAINLESS STEEL

Low Intensity Gas Infra-Red Heaters

Built For Harsh Wet, Corrosive Conditions

Energy Saving Infra-red Heat:

Here's The Story.

Solaronics Suntube Heaters create heat with infra-red rays, an energy form similar to the sun's rays warming the earth. The Suntube's highly polished stainless steel reflectors focus infra-red energy that is converted into heat as it reaches absorptive objects such as equipment, concrete floors, machines, and of course, people. The surrounding air is then warmed by conduction and convection.

With our 304L stainless steel design, Solaronics Suntube Infrared Heaters are the perfect choice for any high moisture environment.

Options

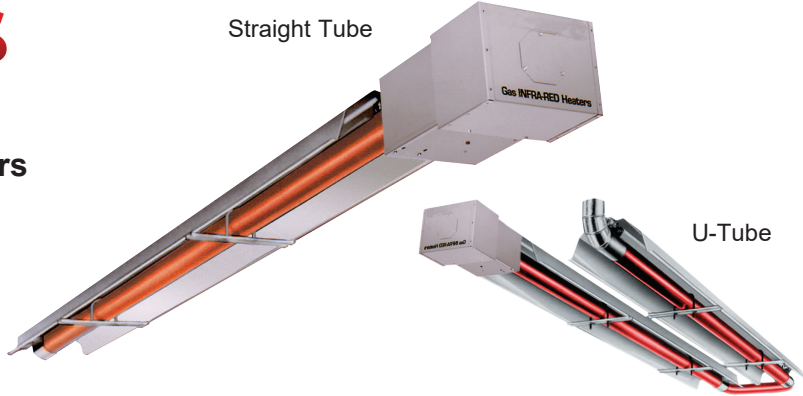
- Side Reflector, 90° Elbows, • "U" Bends, "Y" Couplers
- Inlet and Exhaust Kits, Hangar Kits.

Applications

- Carwashes
- Manufacturing Plants
- Chemical Plants
- Agricultural Operations
- Greenhouses
- Any Wet, Humid or Corrosive Environment



Made In U.S.A.



Saves Up To 75% In Energy Costs

Standard Features

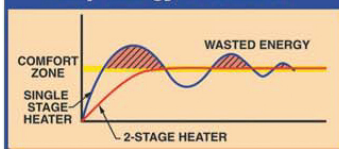
- Proven System Design — Over 30 years
- 304 Stainless Steel Combustion Chamber
- 4" Dia. 16 ga. Aluminized Heat-Treated Emmitter Tubes
- Heavy Duty Stainless Steel 8" Tube Couplings-
- Factory installed wave turbulator for high efficiency
- Highly Polished 304 Stainless Steel Reflectors: 98% Reflectivity
- Choice of reflector arrangements from 0° to 45°.
- 91.7% Reflectional Efficiency (Shape)
- 304L Stainless Steel Burner Motor Housing
- Heavy Duty Fan Motors Enclosed in Sealed Burner Box
- Burner fully assembled & tested — Ready to Hang
- Safe direct spark ignition with 100% safety shut-off
- Pre-purge cycle for safety
- Three System validation lights visible from floor
- Burner controls fully enclosed and isolated from combustion air.
- Simple Chain Mounting
- CSA International Design Certified to ANSI/CGA standards

Warranty

- 10 Year Limited Warranty on Burner Cores
- 5 Year Limited Warranty on Combustion/Heat Exchanger Tubes.
- 1 Year Limited warranty on All Burner Controls

TRUE DUAL 2-STAGE Heaters

Stop Energy Overshoot!

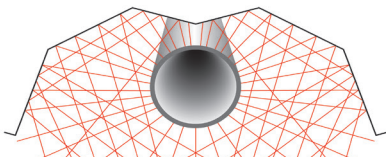


Suntube's 2-Stage Heaters Achieve Optimum Energy Efficiency

Unlike any other systems claiming 2 stage operation, both air and gas flows of the Suntube system provide precise air-to-gas ratios at both the high and low-heat stages for optimum combustion efficiency 100% of the time..

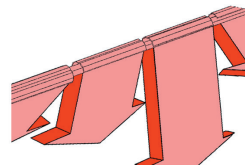
Superior Reflectional Efficiency of 91.7%

33 of 36 infra red rays are directed to the floor: not back on the tube for high efficiency.



Save Up To 75% in Heating Costs and Direct the Heat Where You Want It.

Each 5' or 10' reflector rotates independently from 0° to 45°



INFRARED RADIANT HEATERS

2-Stage - True Dual Stainless Steel Heaters

Patented **2 Stage** low-intensity tube heaters provide precise matching of air/gas flows at both high and low fire stages. True Dual heaters maintain precise control at a desired comfort level while reducing energy costs without “overshooting”.

Straight Tubes		LENGTH (Overall Length including the burner)						
S M T S	BTUH'S X 1,000 Low/High	Gas Type	20' (22')	30' (32')	40' (42')	50' (52')	60' (62')	70' (72')
	85/65	N or L	X	N/A	N/A	N/A	N/A	N/A
	100/65	N or L	N/A	X	X	N/A	N/A	N/A
	125/95	N or L	N/A	X	X	X	N/A	N/A
	150/100	N or L	N/A	N/A	X	X	X	N/A
	175/125	N	N/A	X	N/A	X	X	X
	200/145	N or L	N/A	N/A	N/A	X	X	X
U-Tubes		LENGTH (Overall Length including the burner)						
S M T U	BTUH'S X 1,000 Low/High	Gas Type	20' (13'6")	30' (18'6")	40' (23'6")	50' (28'6")	60' (33'6")	70' (38'6")
	40/60	N or L	X	N/A	N/A	N/A	N/A	N/A
	65/85	N or L	X	N/A	N/A	N/A	N/A	N/A
	65/100	N or L	N/A	X	X	N/A	N/A	N/A
	105/120	N or L	N/A	N/A	X	X	N/A	N/A
	130/150	N or L	N/A	N/A	X	X	N/A	N/A
	150/200	N or L	N/A	N/A	N/A	X	X	X



Part # Breakdown for Ordering 2 Stage Heaters
System Type-BTU Input(Gas Type)Length
Example: SMTS-85/65-N20

System Information

Manifold Operating Pressure
Natural Gas & LP/Propane:
5" WC

Minimum Inlet Pressure
Natural Gas:
7" WC

LP/Propane:
11" WC

1/2" FPT Gas Inlet

Electrical Rating:
120 VAC-60 Hz-1 Phase
Blower: 1/24 h.p. Motor
2.3 max. amp. draw @
138 cfm/free air
Vent Size:
4" ID

Single Stage - Stainless Steel Heaters

Single Stage low-intensity tube heaters operate at one stage for maximum effectiveness in high heat loss situations.

Straight Tubes			LENGTH (Overall Length including the burner)						
S S T G	BTUH'S 1000	Series	Gas Type	20' (22')	30' (32')	40' (42')	50' (52')	60' (62')	70' (72')
	40-60	A	N or L	X	N/A	N/A	N/A	N/A	N/A
	65-85	MB	N or L	X	N/A	N/A	N/A	N/A	N/A
	65-100	B	N or L	N/A	X	X	N/A	N/A	N/A
	105-120	B	N or L	N/A	N/A	X	X	N/A	N/A
	130-150	C	N or L	N/A	N/A	N/A	X	N/A	N/A
	150-200	C	N or L	N/A	N/A	N/A	X	X	X
U-Tubes			LENGTH (Overall Length including the burner)						
S S T U	BTUH'S 1000	Series	Gas Type	20' (13'6")	30' (18'6")	40' (23'6")	50' (28'6")	60' (33'6")	70' (38'6")
	40-60	A	N or L	X	N/A	N/A	N/A	N/A	N/A
	65-85	MB	N or L	X	N/A	N/A	N/A	N/A	N/A
	65-100	B	N or L	N/A	X	X	N/A	N/A	N/A
	105-120	B	N or L	N/A	N/A	X	X	N/A	N/A
	130-150	C	N or L	N/A	N/A	X	X	N/A	N/A
	150-200	C	N or L	N/A	N/A	N/A	X	X	X

Part # Breakdown for Ordering 1 Stage Heaters
System Type-BTU Input-Length(Series)
(Gas Type)
Example: SSTS-60-20AL

**Please see page 52
for accessories**

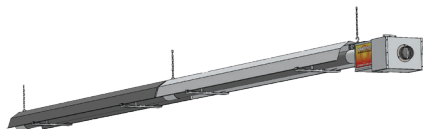
High Elevation Areas:

Elevation must be noted on the PO before submitting it to AMGDS.

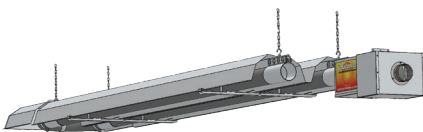
All units are available for higher elevations. Please consult the factory to determine if the unit size is available at a certain elevation.

INFRARED RADIANT HEATERS

Accessories Price List for Solaronics Heaters



Straight Tube Models



U-Tube Models



Made In U.S.A.

5' Increment Heaters
also available

Thermostats

Part #	Description
132026-4	Thermostat, 120 volt, 40-80 degrees, NEMA-1
132486	Thermostat (T115), 120 volt, 40-100 degrees NEMA-4X, Watertight w/ SS Coiled Sensor
0002-42-156	Thermostat, 2 Stage, 24V Microprocessor w/LED
0002-42-177	Thermostat, 2 Stage, Weathertight, Stainless Steel

Combustion/Inlet Air Supply

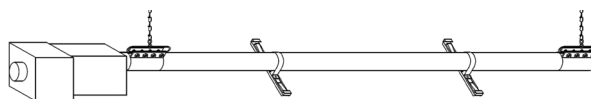
Part #	Description
132336	Wall Supply Kit for 1 Heater (4" OD) (includes outside wall box, flexible duct, sheet metal sleeve) sheet metal sleeve)
132337	Roof Supply Kit for 1 heater (4" OD) (includes roof venting cap flexible duct, sheet metal sleeve and vent connector)
132654	Burner/Blower Enclosure (5-way) (Carwash) (for all blowers, price includes factory installation)
132685	90° Elbow, 16 ga, Aluminized Assembly

Exhaust Venting

Part #	Description
131402	Roof Venting Cap (4" OD)
132149	Roof Venting Cap (5" OD)
132860	Wall Venting Cap (Duravent) - 4"
132861	Wall Venting Cap (Duravent) - 5"
132865	Wall Venting Cap (Duravent) - 6"
132237	Wall Venting Kit (4" O.D) (includes locking collar, wall brace and 4" tee vent cap)
132238	Wall Venting Kit (5" O.D)
132097	Wall Brace
132104	4" ID Tee with Vent Cap and Bird Screen

Elbows & Dual Venting Couplers

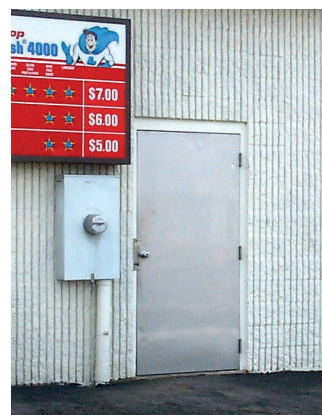
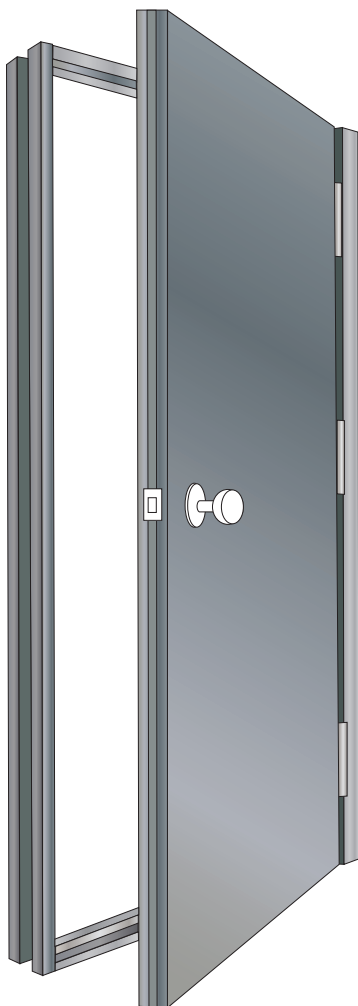
Part #	Description
132619	*90° Elbow (16 ga. Stainless Steel) without Tube Clamp
132620	*Y-Coupler (4" x 4" x 5" 16 ga. Stainless Steel) (for dual venting of all current models)
132687	Y-Coupler, 4" x 4" x 5", 16 ga, Aluminized
132616	*Stainless Steel Tube Clamp
132104	4" ID Tee with Vent Cap and Bird Screen



Chain Mounting

Part #	Description
CH-50	Chain Set - 50' Chain w/ 14 - #5 S-Hooks
CH-25S	Chain Set - 25' SS Chain w/ 14 - #5 S-hooks

STAINLESS STEEL ENTRY DOORS



**INSULATED DOORS
ACCESSORIES
HARDWARE**



Made In U.S.A.

Insulated, durable & rust-resistant

STAINLESS STEEL ENTRY DOORS

Insulated Door System



Features

- Full thermal break of jambs, header, threshold and panel.
- 16 ga. x 3-1/2" stainless steel jambs
- 1-3/4"- 24 ga. 304 stainless steel door panel.
- Foamed-in-place insulation - R-12
- Full perimeter weatherstripping
- Nylon lock insert
- Stainless steel hinges
- Adjustable strike plate
- Standard Sizes - 3'0" x 6'8" and 3'0" x 7'0"

Low Maintenance

Economy with Durability

Attractive Seamless Appearance

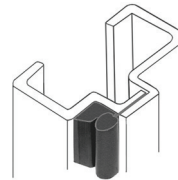
Excellent Energy Savings

Ease of Installation

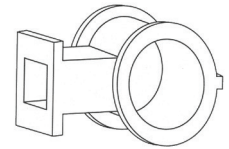


Made In U.S.A.

Other Quality Features

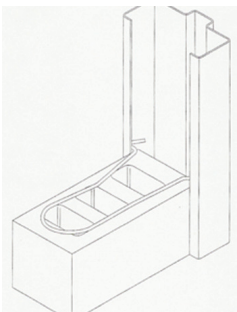


Dual Sealing Weatherstrip
Provides maximum protection from air infiltration in the toughest weather.

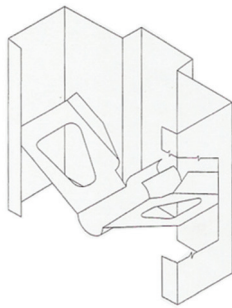


Non-Collapsible Nylon Insert
Eliminates lockset loosening
No wood block to deteriorate or absorb moisture.

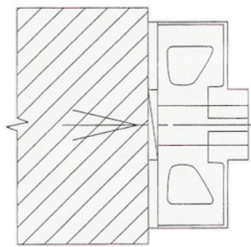
Choose From A Variety Of Mounting Options



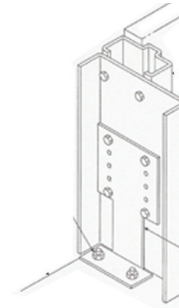
CMU Masonry Anchors



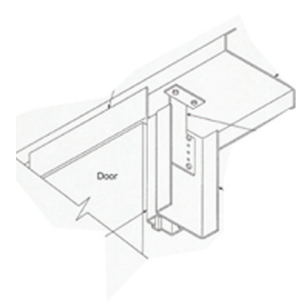
Snap-In



Masonry Anchors



Base Floor Attachment



Header Girt Attachment

STAINLESS STEEL ENTRY DOORS

Part #	Unit Size	Description
T8-3068SS304	38-5/8" x 81-7/16"	3/0 x 6/8 SS Thermal Door
T8-3070SS304	38-5/8" x 85-7/16"	3/0 x 7/0 SS Thermal Door
T8-4068SS304	49-3/8" x 81-7/16"	4/0 x 6/8 SS Thermal Door
T8-4070SS304	49-3/8" x 85-7/16"	4/0 x 7/0 SS Thermal Door
T8-4080SS304	49-3/8" x 96"	4/0 x 8/0 SS Thermal Door
T8-6068SS304	74-15/16" x 81-7/16"	6/0 x 6/8 SS Thermal Door
T8-6070SS304	74-15/16" x 85-7/16"	6/0 x 7/0 SS Thermal Door
T8-8070SS304	94-7/16" x 85-7/16"	8/0 x 7/0 SS Thermal Door
T8-8080SS304	94-7/8" x 96"	8/0 x 8/0 SS Thermal Door
DR-000001	Other Than Standard	Special Size Adder
DR-400101	5" Wall	SS Sub-frame Extension
DR-400101	8" Wall	SS Sub-frame Extension
DR-400101	10" Wall	SS Sub-frame Extension
DR-400101	12" Wall	SS Sub-frame Extension

Note: Rough opening size for door is typically 1/4" larger than unit size per side.
Sub-frame is intended for Masonry/Block Wall only.

Accessories

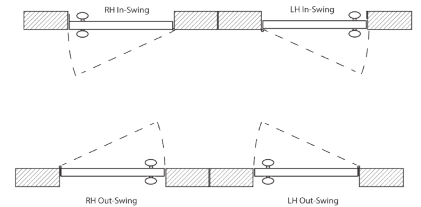
Part #	Description
DRL-200310	Door Closure, Stainless Steel
DRL-100285	Door Closure with #3 Reg. Arm
DRL-100307	Panic Hardware w/Ball Knob, Stainless Steel
DRL-100305	Panic Hardware w/o Knob, Stainless Steel
DRL-200309	Commercial Lock Set, Stainless Steel
DRL-200313	Passage Lockset, Stainless Steel
DRL-200316	Privacy Lockset, Stainless Steel
DRL-200202	Commercial Deadbolt, Stainless Steel
DRL-000025	Deadbolt Prep Charge
DRL-200252	Stainless Steel Kickplate, 10" x 34"
DRL-200312	Stainless Steel Pull Plate, 3-1/2" x 15"
DRL-200311	Stainless Steel Push Plate, 8" x 16"
*DRW-1616SS	16" x 16" Stainless Steel Vision Panel
*DRW-2024SS	20" x 24" Stainless Steel Vision Panel
*DRW-2236SS	22" x 36" Stainless Steel 1- Lite Vision Panel
*DRW-1212SSW	12" x 12" Stainless Steel Vision Panel, Wire Glass
*DRW-1616SSW	16" x 16" Stainless Steel Vision Panel, Wire Glass
**DRW-1616	16" x 16" Window Kit, 1" Insulated Glass, PVC Frame
**DRW-2024	20" x 24" Window Kit, 1" Insulated Glass, PVC Frame
**DRW-2236	20" x 24" Window Kit, 1" Ins. Glass, PVC Frame, 9 L.P
**DRW-1616W	16" x 16" Window Kit, 1" Insulated Glass, PVC Frame
**DRW-2024W	20" x 24" Window Kit, 1" Insulated Glass, PVC Frame
**DRW-2236W	20" x 24" Window Kit, 1" Ins. Glass, PVC Frame, 9 L.P
DRL-300059	Astragal, Stainless
DR-200191	Masonry Clips for Doors

*Windows are installed at the factory

** Windows are provided as a kit- Not installed at factory

The Ideal Door
For
High-Moisture or
High-Corrosive
Environments!

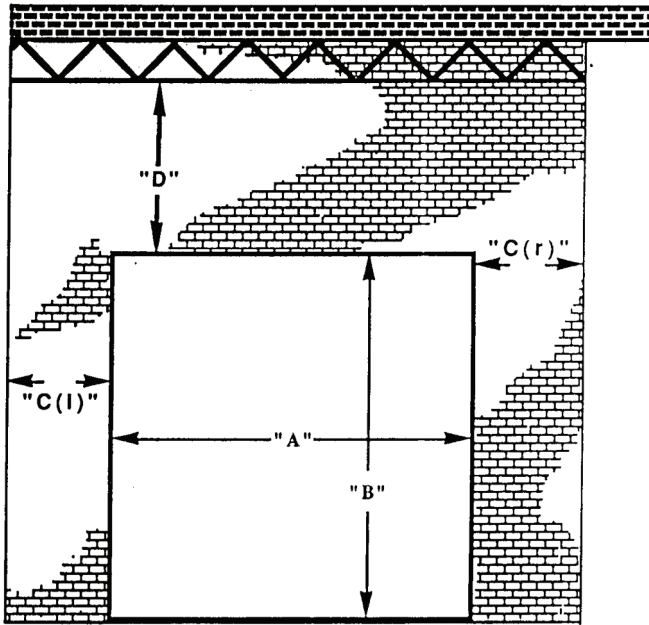
Please Specify Door Swing
When Ordering.



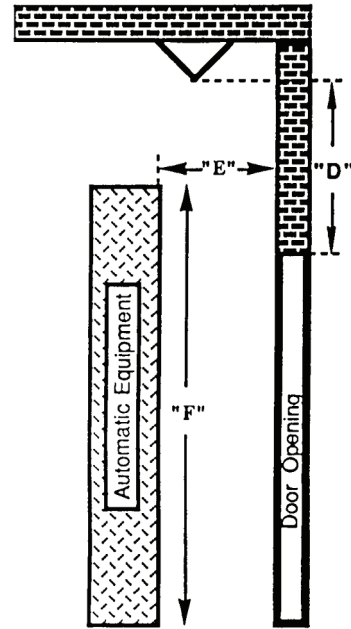
Shown with Optional Pull
Handle and Door Closure

Opening, Building & Equipment Data

Please use this form to help us ensure that your quote/order is accurate



Inside View



Side View

Dimensions (Fill in Completely)

A. Finished Opening Width: _____

B. Finished Opening Height: _____

C (r). Right Sideroom: _____

C (l). Left Sideroom: _____

D. Headroom: _____

Floor to Ceiling Height: _____

E. Backroom: _____

F. Equipment Height: _____

G. Jamb Material: _____

Company Name: _____

Address: _____

City/State/Zip: _____

Phone: _____

Fax: _____

Email: _____

Contact: _____

<p>Mechanical Room Applications Only:</p> <p>Distance to Mechanical Room Wall: _____</p>

Equip Your Favorite Door Survey Form



Name: _____

Company: _____

Address: _____

City: _____ State: _____ Zip: _____

Phone: _____ Cell: _____

Email 1: _____ Email 2: _____

Sections

Door Size: Width: _____ Height: _____ Thickness: _____

Construction: # of Sections: _____ # of Center Stiles: _____

End Stiles: Single Double

Door Type: Steel Aluminum/Glass Wood

Springing

Weight (lbs): With Hardware: _____ W/O Hardware: _____

Headroom: _____ Sideroom: _____ Equipment Ht: _____ (If applicable)

Door Manufacturer: _____ Model: _____

Track

Size: 2" 3" 2" over 3" (LHR)

Material: Stainless Steel Galvanized Steel

Type: Angle Mount Bracket Mount

Mounting: Leg-In (1" Lap) Leg-Out (1" Lap) Leg Out (No Lap)

Jamb Material: Wood Steel Concrete

Track

Configuration: Standard Lift High Lift Full Vertical Lift

HL Ext. Vertical LHR- Front LHR Rear

Other: _____

Roof Pitch: Pitch Angle: _____/12" (If applicable)

Hardware

Shaft Size: 1" Solid Keyed 1-1/4" Solid Keyed 1" Hollow

Shaft Material: Stainless Steel Galvanized Steel

Bearing Plates: Stainless Steel Galvanized Steel

Bearings: Greaseable- Std. Greaseable- Stainless Freeway

Torsion Springs: Galvanized Stainless Steel # Of Springs: _____

Spring Cycles: 12-25 K 50K 75K 100K

Drums/Couplers: Coated Non-Coated

Rollers: Magnum Supreme Bearingless

Hinges: Stainless (11 ga) Galvanized (11 ga)

Struts: Stainless Steel Z - Strut (Aluminum) Hat Strut (Galvanized)

FORMS

Request Date
Ship Date: _____
Date In: _____

Order Form-Polycarbonate Door

Page ____ of ____

Order # _____

Job Name: _____

Bill To: _____

 Phone _____

Ship To: _____

 Phone _____

Call Needed
When Ship?
 Yes No
 P.O # _____

Number of Doors _____ Door Width _____ X Height _____

Operation: Manual Operation Drawbar Opener Jackshaft Opener

Model: Platinum Gold Silver Bronze
 Springs Springs Springs Springs
 Counter-Balance Strap Strap Strap Springs
 Cable RH/LH Cable RH/LH Cable RH/LH Cable RH/LH

Yes No

Sections

Non Standard Color Specify: _____
 5/8" Full Vision Sections
 Transom Door No. of Sections _____ No. of Doors _____
 Conveyor Cut-outs- Attach Drawing Inside Lock Only Outside Lock
 Anodized Frame. Color _____ Attach Color Specification
 Powder Painted Frame. Color _____ Attach Color Specification
 Exhaust Ports Size: _____ Location: _____

Track

Size: 2" 3" 2" on 3"
 Material: Galvanized Stainless Steel
 Mounting: Angle In Angle Out
 Jamb Material: Wood Steel Concrete
 Configuration: Std. Lift Highlift _____ F. Vert. Lift
 Low-Hdrm Front Low-Hdrm Rear
 Roof Pitch _____ Use All Headroom

Working Envelope

Headroom _____
 To Clear _____
 (Equipment Height)

Yes No

Hardware

Coated Hardware Drums Cones Coupler
 Special Rollers Bearingless Magnum SP
 Stainless Steel Bearings
 Stainless Steel Springs
 Pusher Springs Standard Stainless Steel 6" Std. 15" Std.
 Operator Preparation Z-Strut Center Stile
 Mechanical Room Kit 6' Silver 6' Gold 6' Platinum
 Angle Iron Galvanized Stainless Steel Qty: _____ Lengths: _____
 Double End Stile

TERMS & CONDITIONS

- PRICING:** All prices are FOB Bemidji, MN. Prices are subject to change without notice.
- TERMS:** Cash, accepted credit card, or net 30 with approved credit. Balances over 30 days are subject to a finance charge of 1-½% per month. NSF checks will be charged a \$ 30.00 service fee. No material will be manufactured or shipped to overdue accounts with balances over 15 days from the oldest transaction due date. Orders will be processed only on a pre-pay basis until credit is approved. The processing of all orders is subject to the approval of the credit manager. All products will remain the property of American Garage Door Supply until paid in full. All payments with credit cards will be subject to a 3% processing fee.
- ORDERING:** Written orders are preferred, when possible, to ensure accuracy of order. Please provide all details and specifications when ordering. Customer will assume total responsibility for all errors unless the order is in writing. All special or custom orders require a minimum of a 50% Deposit.
- CHANGE ORDERS, CANCELLATION OF:** All change orders are to be in writing. Non-stock, special door sizes or quantities are not returnable or Cancelable. Deposits for custom products are forfeited upon cancellation.
- RETURNED MERCHANDISE:** No materials will be accepted without a return authorization (RMA) from the factory. Custom product is non-returnable. Freight on returned material must be prepaid by customer. A 25% restocking fee will be applied on returned, non-warranty product if accepted after inspection at our dock.
- WARRANTY POLICY:** Call factory with the following information.
- Describe reason for return or symptoms.
 - Provide serial numbers, part numbers, invoice number and other pertinent information.
 - Obtain Return Authorization (RMA) from factory. Returns will not be accepted without an RMA.
 - Replacement Product is shipped and invoiced to responsible ordering party.
 - Customer returns product pre-paid to factory for evaluation.
 - Upon warranty evaluation and approval, an appropriate credit will be issued to the customer.
 - Scratches /shipping rashes are not considered defects.
- SHIPPING DAMAGE:** **It is your responsibility to check all freight for obvious or concealed damages at delivery.** Buyer must immediately make all claims for delay, damage, or loss in transit to American Garage Door Supply Inc. In the case of damaged freight, it is to be accepted as such and the damage is to be noted on the freight bill or bill of lading. Customer must immediately report damages to American Garage Door Supply and provide all appropriate documentation including copies of accepted freight bills with noted damage, images, notes, etc. These will be necessary to support a valid claim. Customer is responsible for the cost of replacement products delivered under any customer freight claim situation.
- SHIPPING ESTIMATES:** Shipping costs are prepaid and added to the invoice. Shipping estimates from qualified carriers are provided as a service to provide the best quality delivery to your destination at the best value. We coordinate these services through our experienced shipping department. Other options to acquire your order are available upon request.
- All shipping estimates are based on a single attempt commercial delivery at a loading dock or otherwise appropriate unloading area unless otherwise specified.
 - Estimates are based on a 15-minute or less driver wait times at time of delivery. Buyer is responsible for extra shipping charges including: demurrage, re-delivery, liftgate requirements or other fee's incurred above the shipping estimate from deliveries outside of normal conditions and those listed above. These are charged by the carrier and beyond our control.
- LABOR/OTHER CHARGES:** Under no circumstances will American Garage Door Supply assume responsibility for labor or other charges unless agreed upon in writing in advance. A storage fee of \$ 250.00 per month will be added to door, operator and large hardware orders not shipped or picked-up after 2 weeks of scheduled ship date.
- SALES TAX RESPONSIBILITY:** Customer is responsible for payment of all applicable state and local taxes, or for providing a valid sales tax exemption certificate. When placing an order, customer shall indicate which products are tax exempt and provide proper documentation as required.

SEARCHING FOR ULTIMATE SUPPLIES CARWASH DOORS & OPERATOR PRODUCTS?

We Have What You Need!

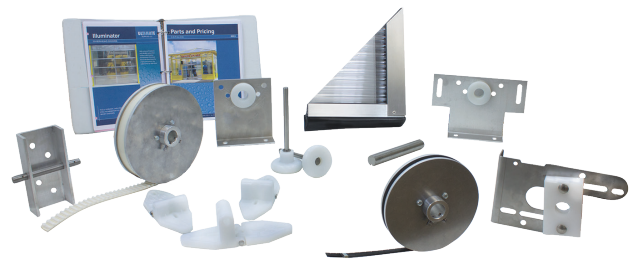
Carwash Garage Door Components

Polycarbonate door sections, track, torsion springs, shafts, hinges, rollers, brackets, door pick-up belts, cables, straps & spools, bearings, counterbalance/counterweight components & much more.



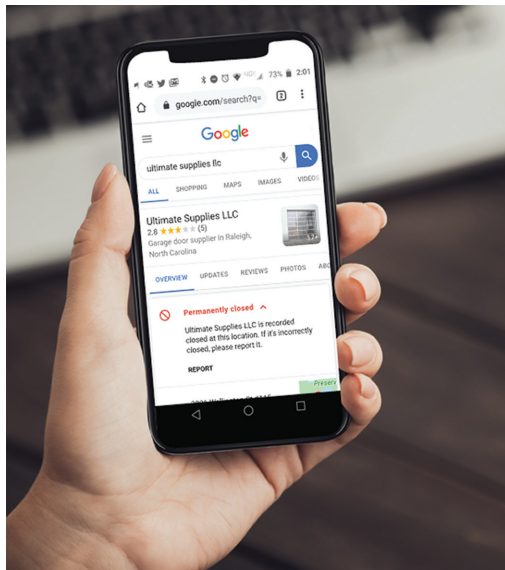
Air-Powered Operator Parts

Cylinder seal & repair kits, valves, operator belts & belt rollers, speed control valves, mufflers, chain & sprockets, turnbuckles, pistons, top and bottom caps, control box components, push buttons, keyswitches, photoeyes and more.



Electrical DC Operators

Gear boxes, motors, control box components & replacement panels, send in repair and more.



We can help you and your customers keep their car and truck wash operations in full swing with genuine Ultimate door and opener service and replacement parts.

American Garage Door Supply Inc. acquired a significant amount of Ultimate Supplies (Raleigh, NC) inventory from them after they ceased operations.

We now have the all the original factory service parts and replacement components that you need to properly service, maintain and replace your Ultimate Polycarbonate Carwash Garage Doors, Air-Powered Openers and Electric DC Operator Systems.

Our friendly and knowledgeable team is ready to help no matter what your needs, our goal is to help you keep operating seamlessly and profitably every day.

Give us a call today!

**Only
While Supplies
Last!!**

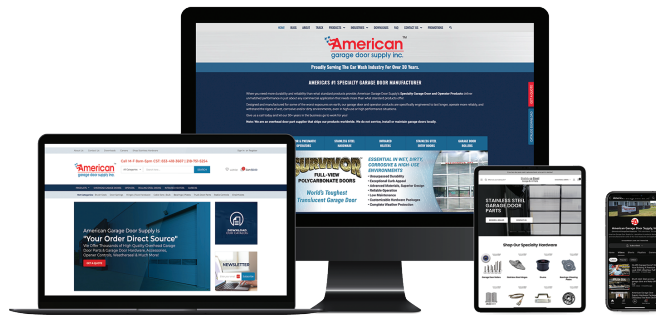
- Original Repair & Service Parts
- Regular Maintenance Items
- Complete Replacement Systems



★ VISIT US ONLINE ★

Visit us online 24/7/365 for convenient access to:

- » Up-to-date information on our new and existing products
- » Product literature, specifications and shop drawings
- » Manuals and technical tips
- » Order information and easy ordering
and much more!



carwashdoors.com

Visit our carwash doors site for product information regarding all of our specialty products listed in this catalog. The site features product and ordering information including a section for easy, convenient downloadable documents including: product literature, specifications, shop drawings, manuals, technical tips, and more.



stainlessgaragedoorparts.com

When you login to our stainless steel parts site, you will find product information, specifications and easy online ordering of your specialty garage door parts. This site focuses on our stainless steel and specialty garage door hardware and features secure and convenient access to order your new, retrofit or repair hardware for your specialty project anytime of the day.



YouTube

Check out our YouTube Channel and view from dozens of videos that feature overviews of our organization and our products along with detailed product demonstrations, identification, installation, service & maintenance tips.

Find us at: <https://www.youtube.com/AmericanGarageDoorSupplyInc.>

Don't forget to like our videos, share and subscribe!

★ **MADE IN AMERICA** ★

THRIVING IN THE WORLD'S TOUGHEST ENVIRONMENTS

WET • CORROSIVE • DIRTY

- » CAR WASHES
- » TRUCK, TRAILER, BUS & OTHER WASHDOWN FACILITIES
- » WASTE TREATMENT PLANTS
- » LIVESTOCK BARNES
- » FERTILIZER PLANTS
- » FOOD PROCESSING PLANTS
- » SALT/BRINE FACILITIES
- » DAIRY PROCESSING
- » MEAT PROCESSING PLANTS
- » LAKE/RIVERS/WATERWAYS
- » POULTRY FARMS
- » MINING AREAS
- » FISH/SEAFOOD PROCESSING
- » MANY MORE...



DURABLE, RELIABLE & BUILT TO LAST.

 **American**TM
garage door supply inc.

1225 Industrial Park Drive SE
Bemidji, MN 56601

★ CALL

1-800-233-1487

★ VISIT US ONLINE

Carwashdoors.com

★ MEMBERS OF:

 **GIDA**TM
International Door Association

 **INTERNATIONAL
CARWASH
ASSOCIATION**[®]
GENERAL WASHING EQUIPMENT